

Utility Software Data Connection For 62S Instruction Manual



**Please read this instruction manual
carefully before installation.**



LICENSE AGREEMENT

READ THE TERMS OF THIS AGREEMENT CAREFULLY.

Fujikura Co., Ltd. (hereinafter referred to as "Fujikura") provides Data Connection For 62S and the attached files (hereinafter referred to as "licensed product") for use on the following terms and conditions. If you do not agree to the terms of this license, do not install, copy, or otherwise use this licensed product.

1. Licensing Policy

The software may be installed in your computers as long as you comply the terms and condition of this License Agreement.

2. Prohibited Uses

You may NOT:

- (a) Sell, lend, transfer, rent or allow any other person these actions.
- (b) You may not rent, lease, or lend the software.
- (c) Decompile, or reverse engineer the software.
- (d) Export, re-export, or import the software from/to another country.

3. Attribution of Intellectual Property Right

This Agreement does not grant you any Intellectual Property Rights of the licensed product.

Use of the licensed product, unless pursuant to the terms of a license granted by Fujikura or as otherwise authorized by law, is an infringement of Intellectual Property Rights.

4. Limitation of Liability

- (a) Fujikura assumes no liability and shall not be responsible for, and you hereby assume all risk of: any linkage to any communications with any third parties, and any damage resulting from any computer viruses or from linkage to any third party sites. Fujikura shall not be responsible for any direct, indirect, incidental, consequential damages arising out of your use.
- (b) Fujikura will not be liable for any consequential damages under any circumstances, unless such exclusion is forbidden by law.

5. Non-assignability of Rights and Obligations

Licensee may not assign or transfer any rights or obligations of the licensed product under this Agreement without prior written approval from Fujikura.

6. Termination

Your rights under this License will terminate automatically without notice from Fujikura if you fail to comply with any term(s) of this License Agreement.

Upon the termination of this License, you shall cease all use of the licensed product and destroy all copies, full or partial, of the licensed product.

7. Term of Limitation

This license agreement shall be effective until it goes into effect from the time of being used of this product, and the end of use of this product or Fujikura cancels this license agreement by regulation of the 6th clause.

<u>1.</u>	<u>Introduction.....</u>	<u>2</u>
<u>2.</u>	<u>System Requirements</u>	<u>2</u>
<u>3.</u>	<u>Install</u>	<u>3</u>
<u>4.</u>	<u>Install the Software.....</u>	<u>4</u>
<u>5.</u>	<u>How to use the Data Connection For 62S.....</u>	<u>14</u>
5.1.	Real-time Control	15
5.2.	Splice Result Memory	19
5.3.	Download, Save, Edit and Upload Settings	24
5.4.	Firmware Update	30
5.5.	Update Data Connection	37
<u>6.</u>	<u>Uninstall the Data Connection.....</u>	<u>38</u>
<u>7.</u>	<u>Troubleshooting.....</u>	<u>41</u>
7.1.	Installation of the Device Driver Failed.....	41
7.2.	Data Connection Does Not Run.....	44
7.3.	Installation of Firmware Failed.....	45
7.4.	USB Communication Does Not Works.....	45
<u>8.</u>	<u>Contact Address</u>	<u>46</u>

1. Introduction

Data Connection For 62S (“Data Connection”) is the software included in the package of 62S, the splicer series manufactured by Fujikura.

Read this installation manual before installing Data Connection

2. System Requirements

Computer and processor	1.6 gigahertz(GHz) processor or higher (In case Core TM i3, Intel Corp)
Operating System	Microsoft Windows Vista SP2 (32bit) Microsoft Windows 7 SP1 (64bit / 32bit) Microsoft Windows 8 (64bit) *The operating system must be updated by Windows Update
Memory	2GB (Windows Vista SP2) 4GB (Windows 7 SP1, Windows 8)
Hard Disk	100MB available space
Drive	CD-ROM or DVD drive
Display	1024x768, or higher resolution 24bit, or higher color
Other	USB 2.0 Port Capable of Internet Access, 56kbps or higher Broadband access is recommended

3. Install

Login to the PC using an account with administrator privilege

Administrator privilege is required when installing the software.

If you do not have an account which has administrator privilege, ask the supervisor of the PC for installation.

Exit all programs running on the PC

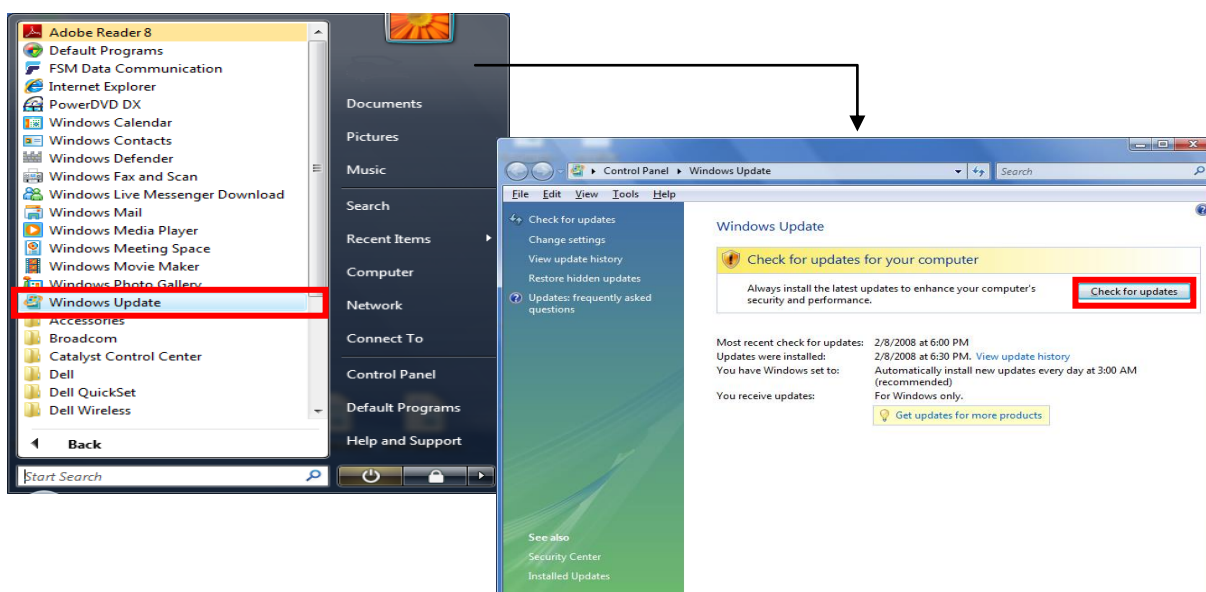
Exit all programs running on the PC. Some programs may prevent installation. Specifically do not install Data Connection when the communication software for another series of splicer is running.

Perform Windows Update or Microsoft Update

Operating System must be updated by latest update.

Perform Windows Update or Microsoft Update before starting installation.

To go to Windows Update or Microsoft Update, select [Start] > [All Programs] > [Windows Update] or [Microsoft Update].



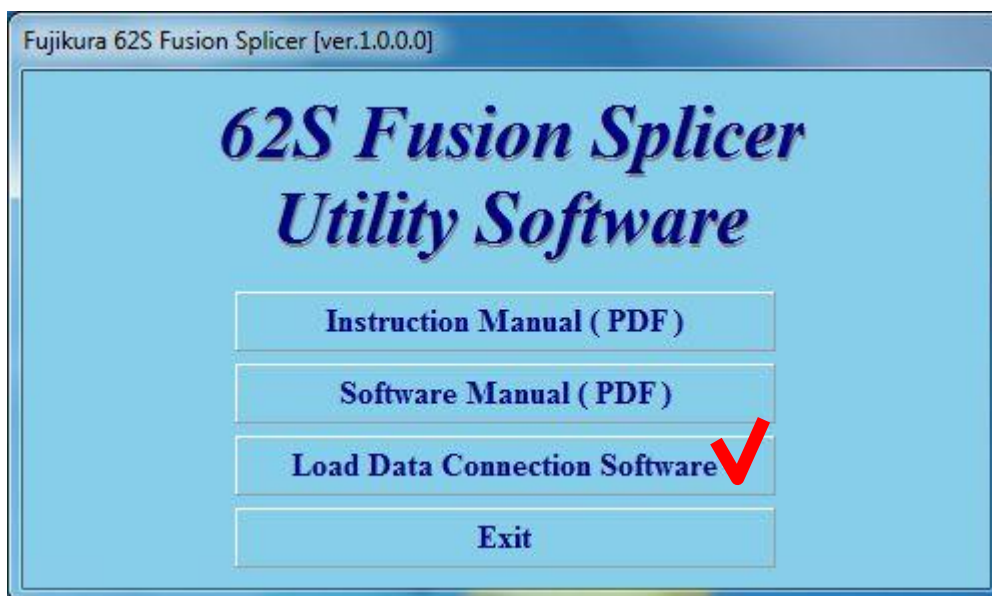
Internet connection is necessary in order to perform Windows Update or Microsoft Update.

4. Install the Software

- (1) Confirm that the USB cable is **not connected**.
- (2) Insert the instruction CD into CD-ROM or DVD drive.
- (3) After a few seconds, instruction menu will be shown automatically.
If the menu is not shown, double-click “Utility.exe” which is in the root of the instruction CD.

Name	Date modified	Type
DotNetFx	4/22/2015 1:16 PM	File
manual	4/22/2015 1:16 PM	File
vc redistrib	4/22/2015 1:16 PM	File
x64	4/22/2015 1:16 PM	File
x86	4/22/2015 1:16 PM	File
autorun.inf	10/13/2012 3:23 PM	Set
install.txt	4/21/2015 2:13 PM	Tex
Installer.exe	4/22/2015 11:08 AM	Appl
Utility.exe	4/16/2015 9:14 AM	Appl

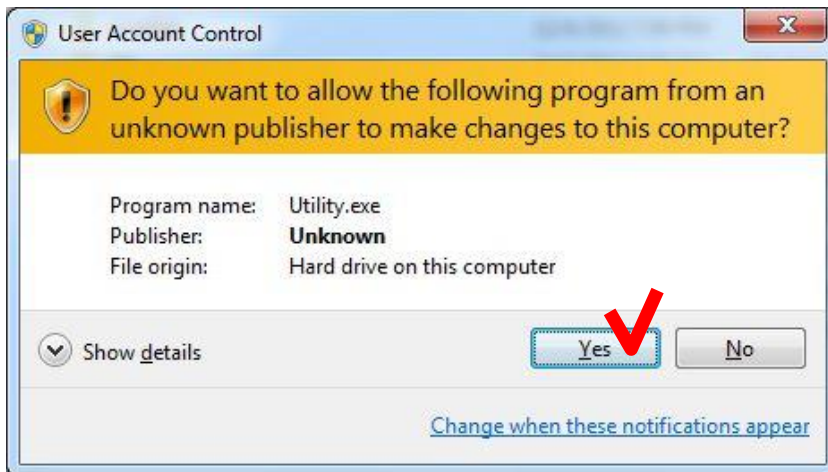
- (4) Click [Load Data Connection Software] button.



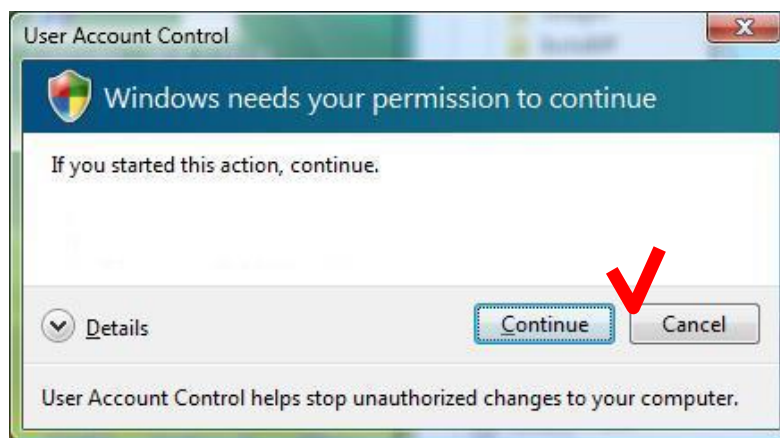


“User Account Control” window may be shown during installation.

Click [Yes] if “Do you want to allow the following program from an unknown publisher to make changes to this computer?” message is shown.



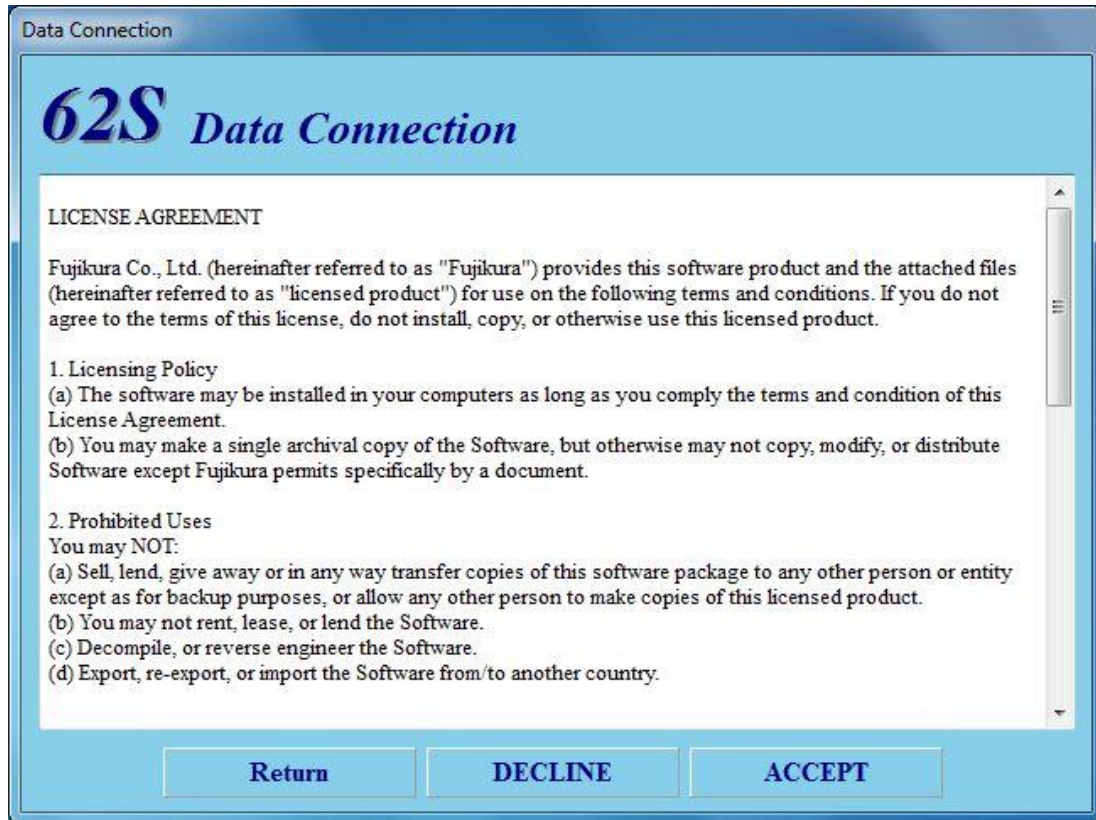
Click [Continue] if “Windows needs your permission to continue” message is shown.



If you run the installer without administrator privilege, the following message will be shown. In this case, login with an administrator account, and run the installer.



- (5) License Agreement confirmation window will be shown.
Click [ACCEPT] button if you accept the License Agreement.
If you do not accept the License Agreement, click [DECLINE] button.
In this case, installation will be cancelled.



If the DataConnection has already been installed, the uninstall menu will be shown.

- (6) Installation of necessary software and driver will start.

Necessary software and driver for Data Connection

- Microsoft .NET Framework 4 Client Profile
- Microsoft Visual C++ 2010 Redistributable
- Usb Driver

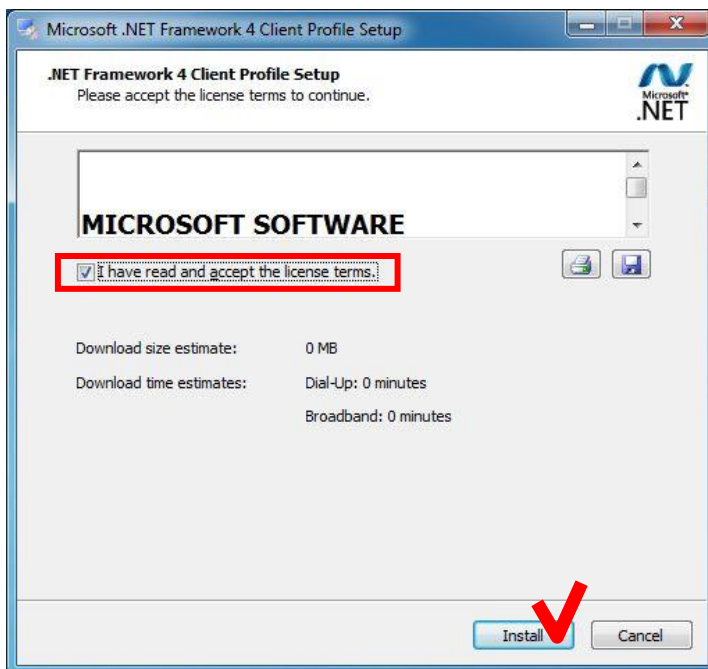
(a) Installation of Microsoft .NET Framework 4 Client Profile

If “Microsoft .NET Framework 4 Client Profile” has not been installed, [Microsoft .NET Framework 4 Client Profile Setup] window will be shown.

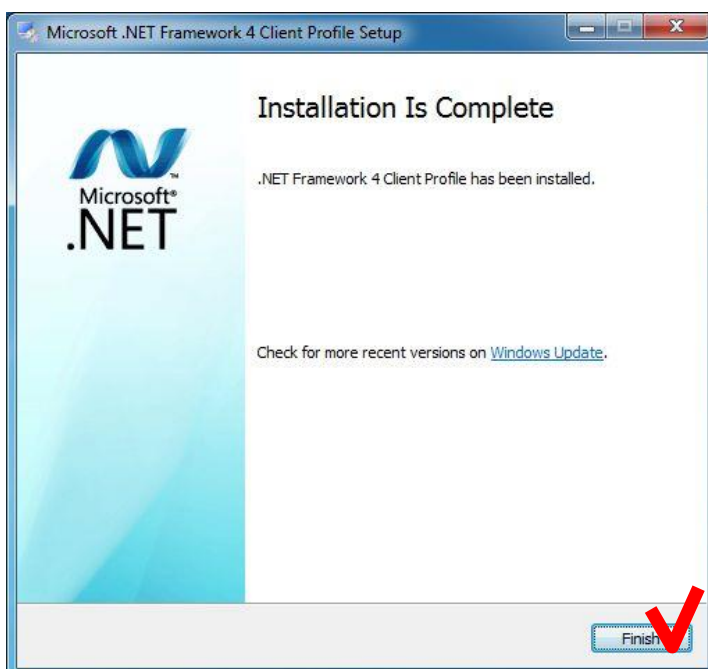


If the installation is not necessary, the following window will not be shown. Proceed to following page

Check [I have read and accept the license terms] and click [Install] button.



When the following window is shown, click [Finish] button to complete the installation.



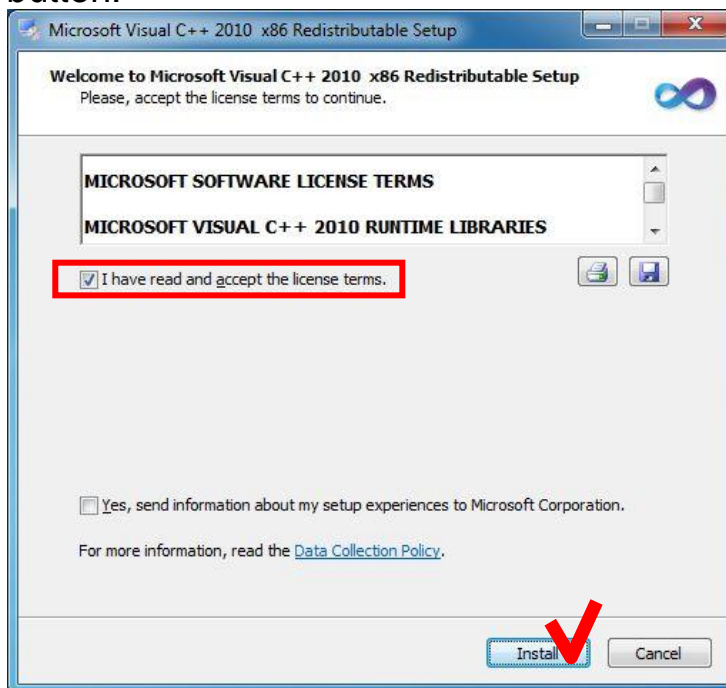
(b) Installation of Microsoft Visual C++ 2010 Redistributable

If “Microsoft Visual C++ 2010 Redistributable” has not been installed, [Microsoft Visual C++ 2010 Redistributable Setup] window will be shown.

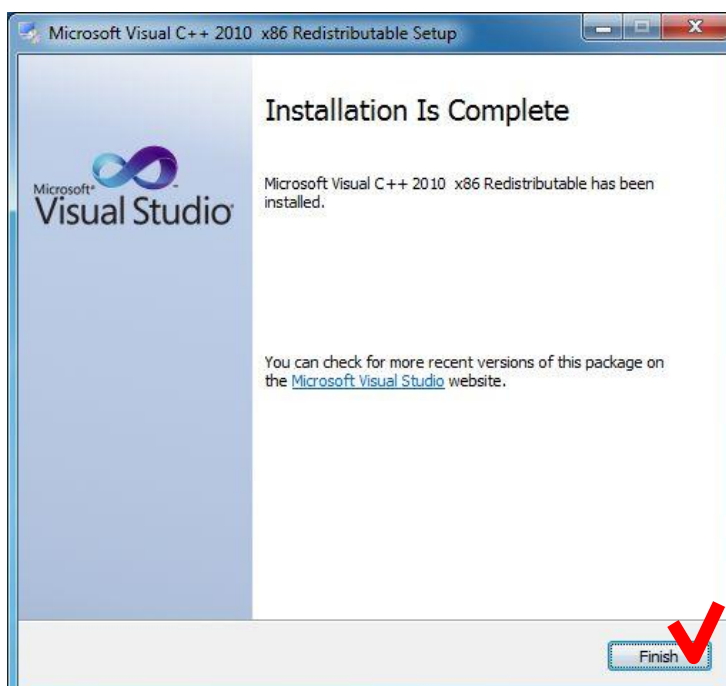


If the installation is not necessary, following window will not be shown. Proceed to following page

Check [I have read and accept the license terms] and click [Install] button.



When the following window is shown, click [finish] button to complete the installation.



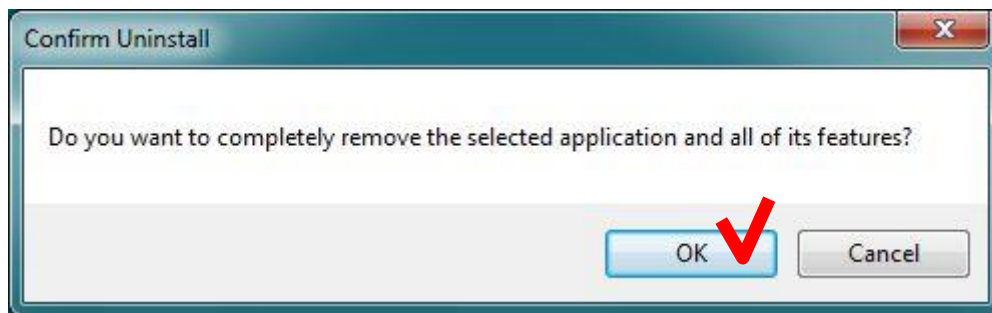
(c) Uninstallation of existing USB driver

If the old version of USB driver has been installed, [Confirm Uninstall] window will be shown.

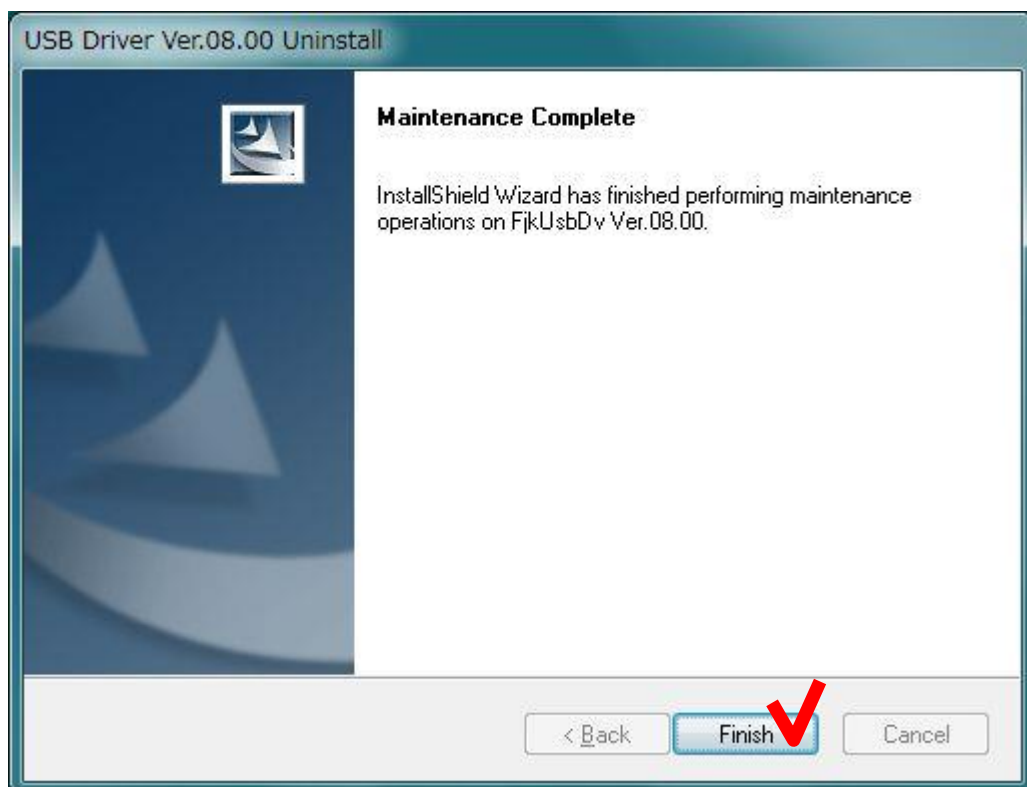


If the uninstallation is not necessary, the following window will not be shown. Proceed to following page

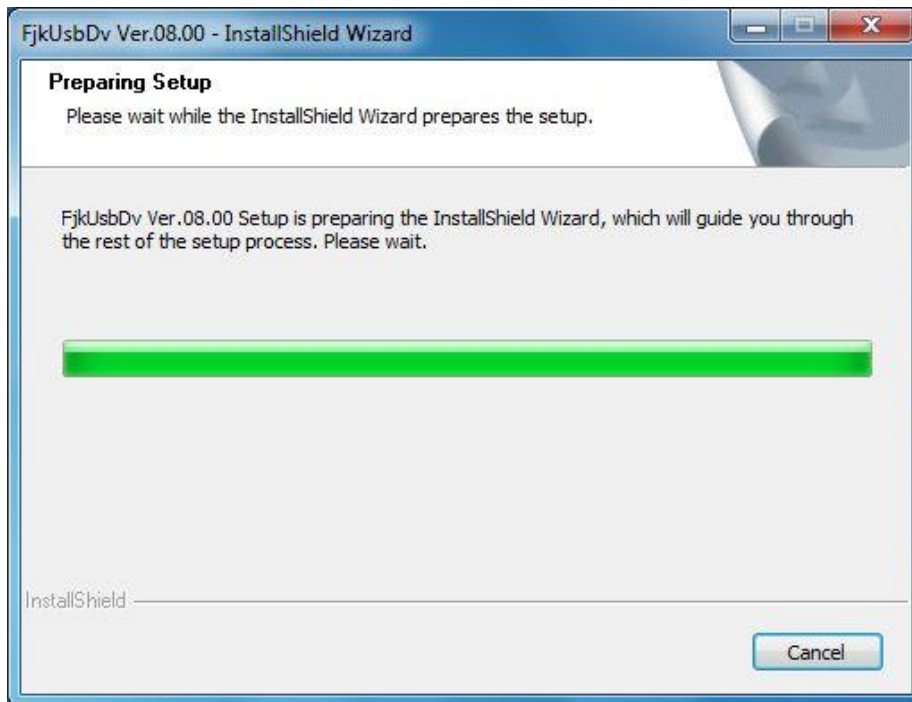
Click [OK].



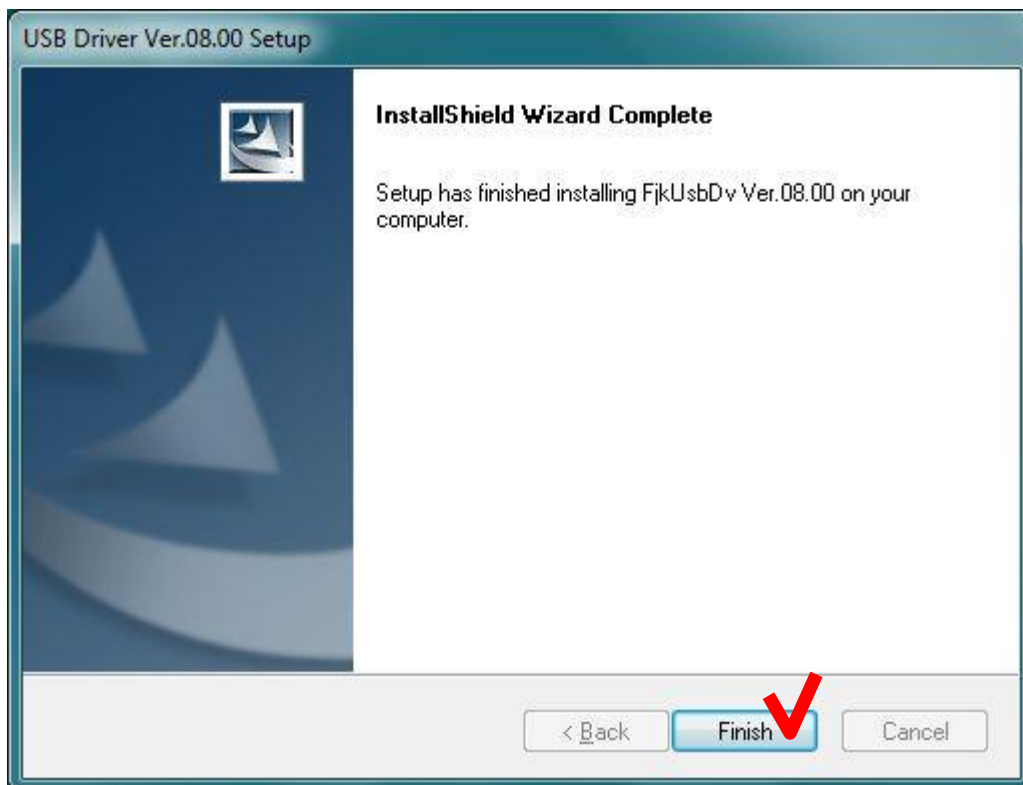
When the following window is shown after the uninstallation, click [finish] to complete the uninstallation.



- (d) Installation of USB driver
[FjkUsbDv InstallShield Wizard] window will be shown.



When the following window is shown after the installation, click [Finish] to complete the installation.



If the following message is shown, click [Install].



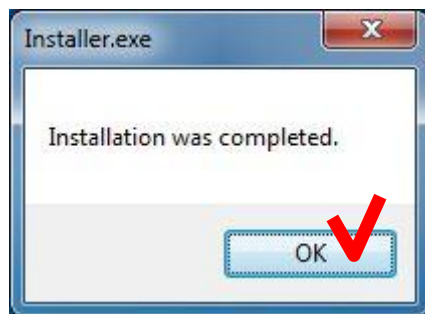
If the following security message was shown, click "Install this driver software anyway".



- (7) Installation of the main program of Data Connection will start.
During the installation, the following message is shown.



- (8) When the following message is shown, click [OK] button to complete the installation.



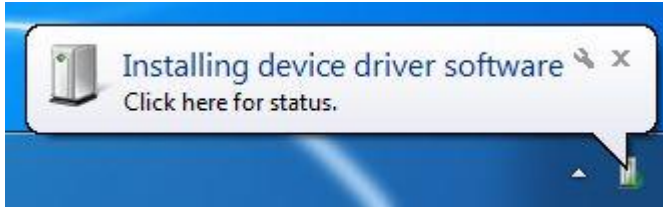
- (9) Click [Exit] button to close the menu.



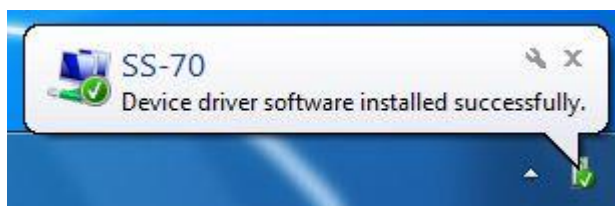
(10) Install device driver.

Turn on the splicer and connect to the PC with USB cable.

“Installing device driver software” message will be shown at notification area in task bar.



When the driver installation is complete, “Device driver software installed successfully” message will be shown.



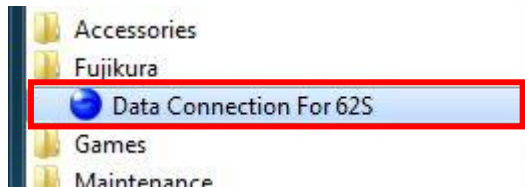
If the “Device driver software installed successfully” message was not shown in a few minutes, please read [Installation of the Device Driver Failed] in [Chapter 7: Troubleshooting]

5. How to use the Data Connection For 62S

Double-click the shortcut on the desktop or click “Data Connection For 62S” in the [Start] > [All Programs] > [Fujikura] menu.



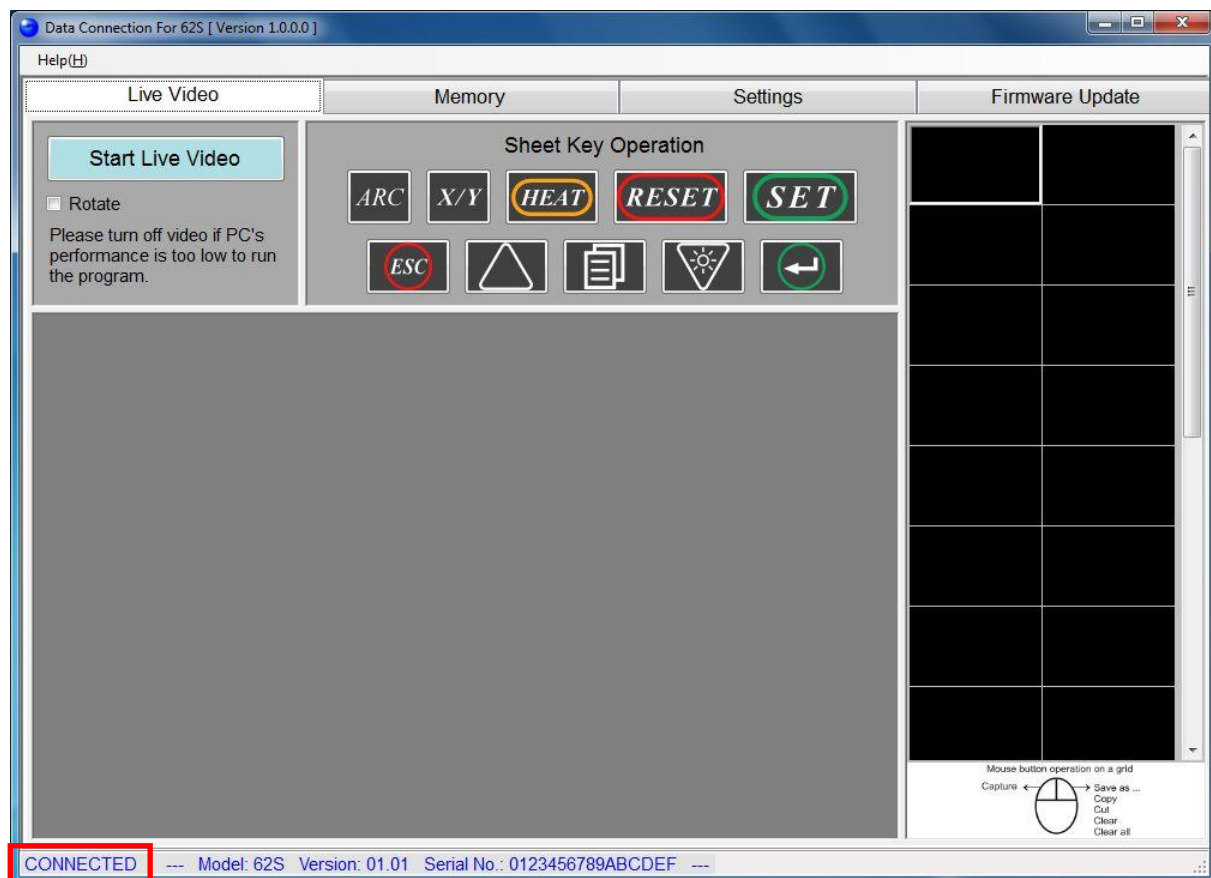
or



If the Data Connection does not run, please read [Data Connection Does Not Run] in [Chapter 7: Troubleshooting].

Turn on the splicer and connect to PC with USB cable.

If the USB communication is ready, “CONNECTED” message will be shown at the bottom left of Data Connection window.



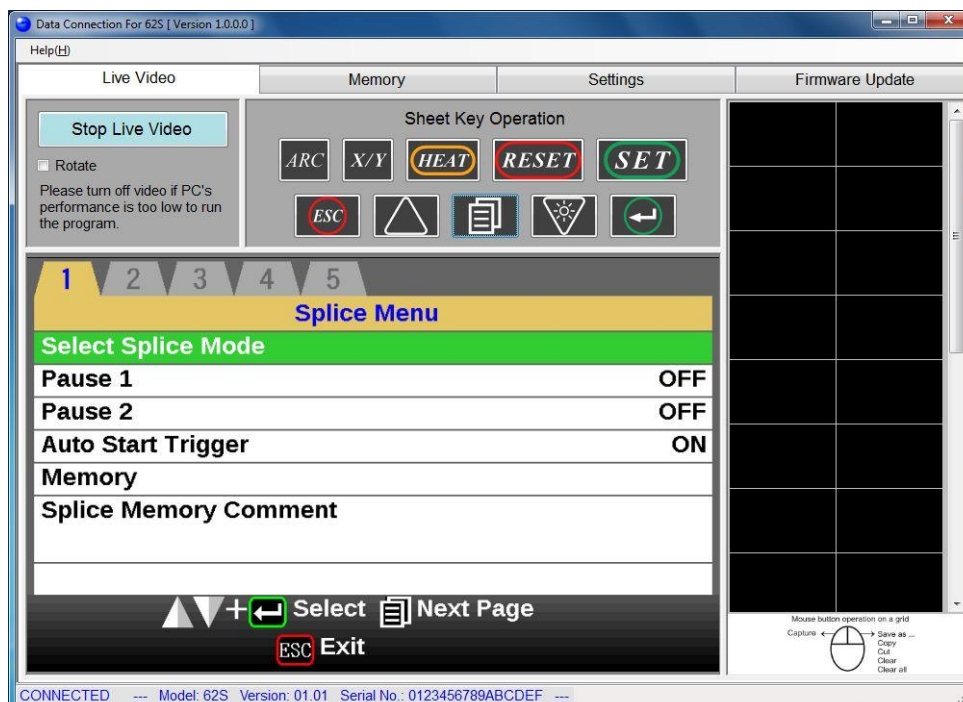
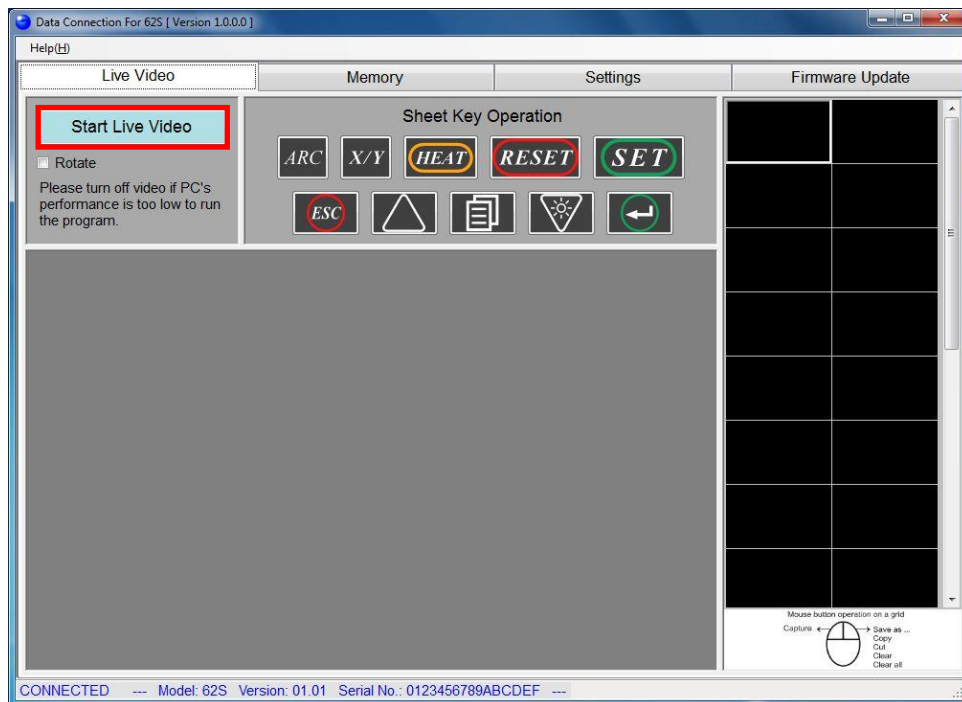
If the “CONNECTED” message was not shown, please read [USB Communication Does Not Works] in [Chapter 7: Troubleshooting]

5.1. Real-time Control

In [Live Video] page, real-time video image can be displayed and captured. And sheet keys on the splicer can be operated by PC buttons.

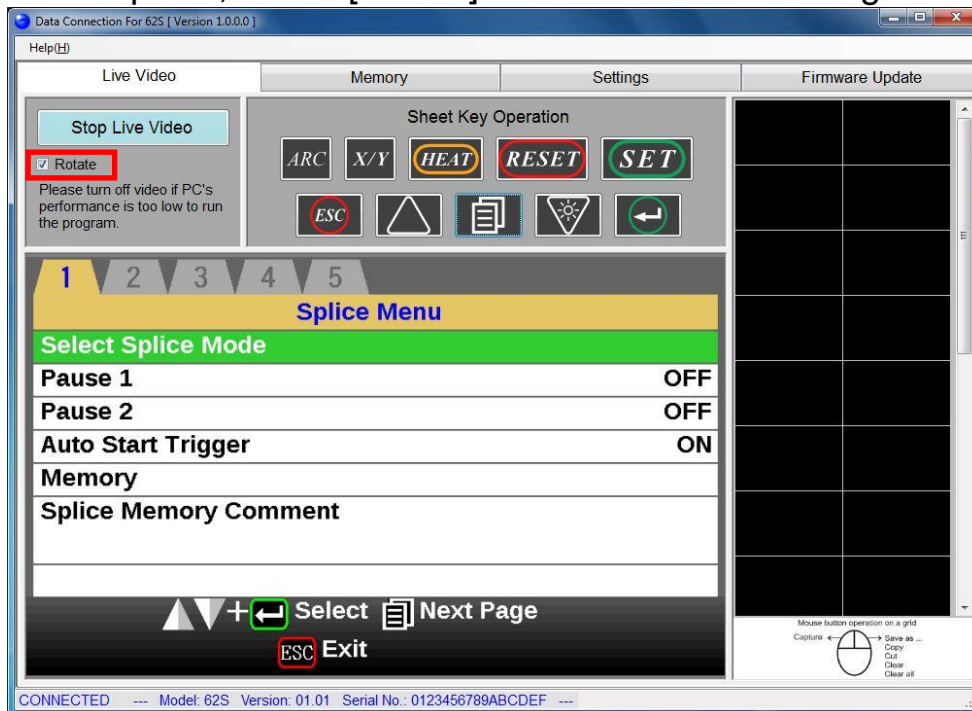
5.1.1. Display the Real-time Video

- (1) Select [Live Video] page, and click [Start Live Video] to start video.
(Then the label of button will be changed to [Stop Live Video])

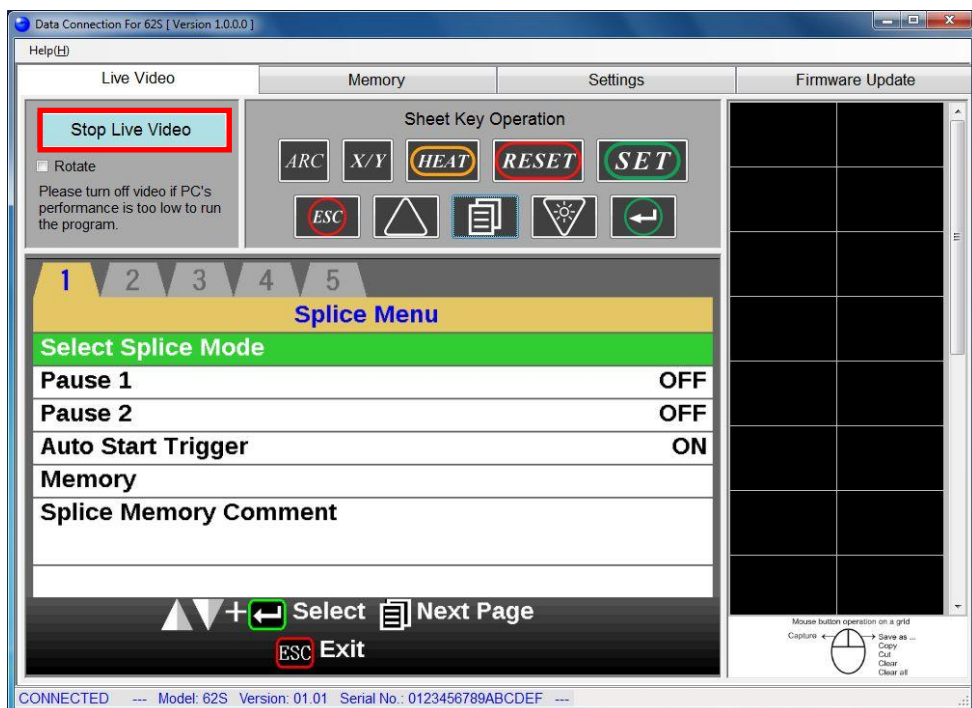


How to use the Data Connection For 62S

- (2) If the video image is displayed upside down because of monitor position of the splicer, check [Rotate] to rotate the video image.

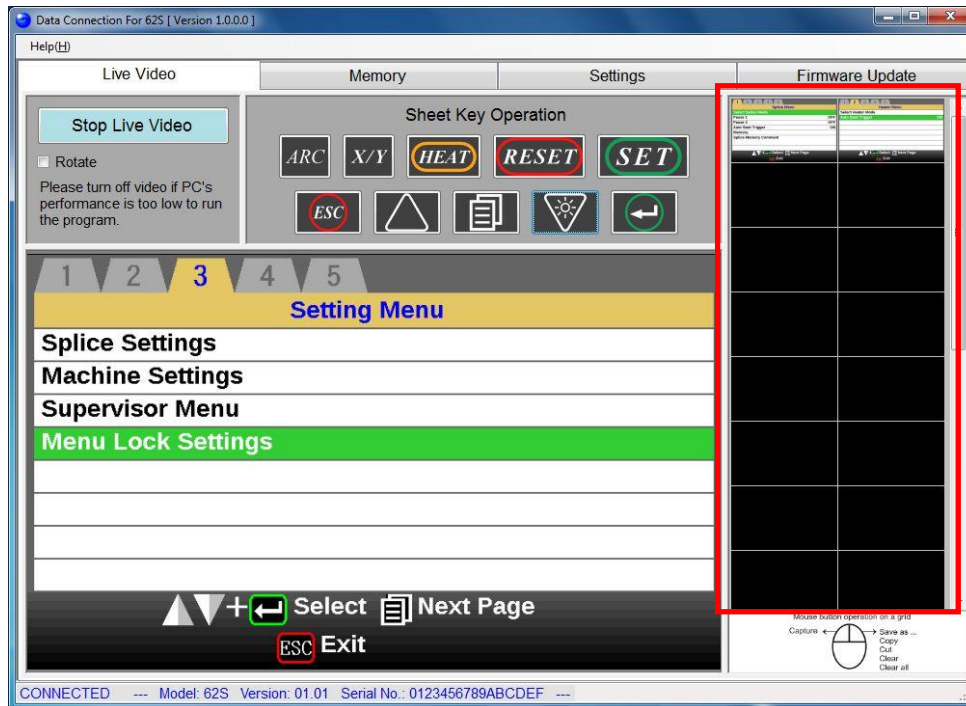


- (3) To stop live video, click [Stop Live Video].
(Then the label of button will be changed to [Start Live Video])

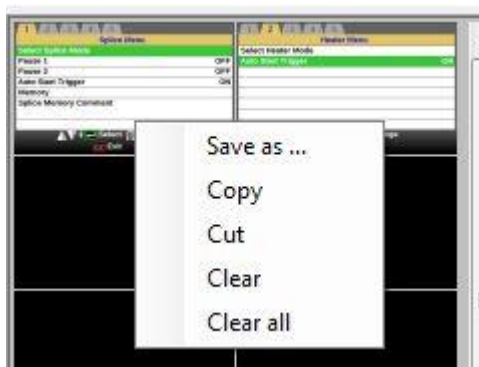


5.1.2. Caputure the Live Video Image

- (1) Click [Start Live Video] to start live video.
- (2) Click the grid on right side of window. The live video image will be captured to clicked grid.



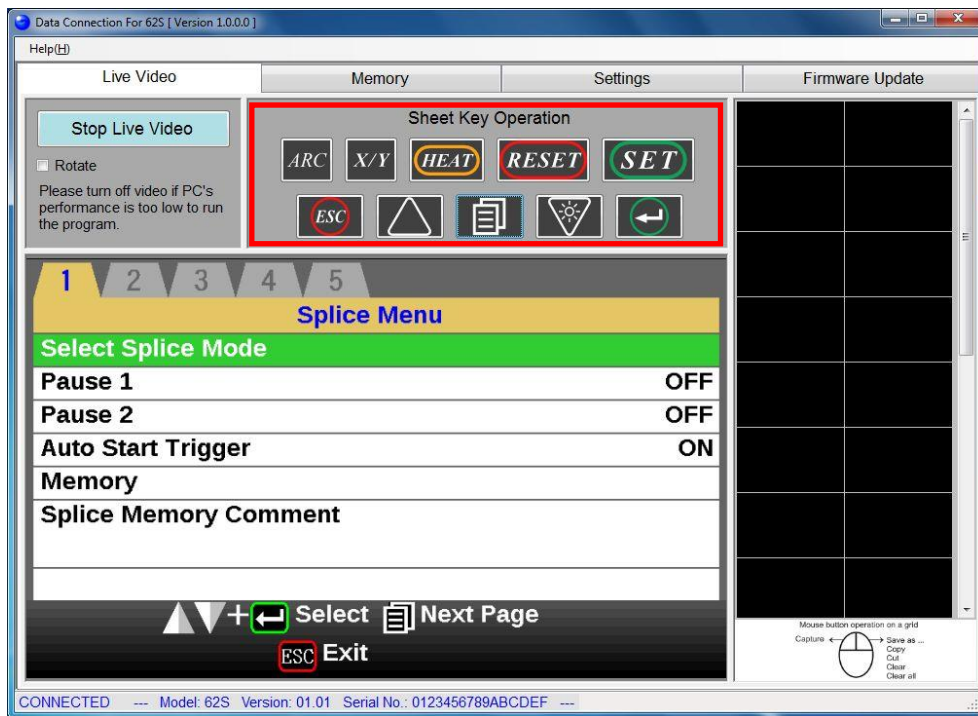
- (3) The functions shown at following table can be performed to the captured image. Right-click the captured image to show the menu, and select the operation.



Menu	Operation
Save As ...	Save the selected image as .jpg file.
Copy	Copy the selected images to clipboard.
Cut	Copy the selected images to clipboard and clear the image from DataConnection.
Clear	Clear the selected image from DataConnection.
Clear All	Clear all images from DataConnection.

5.1.3. Operate the Sheet Key

- (1) Select [Live Video] page, and click the button which you want to operate in [Sheet Key Operation] panel.



5.2. Splice Result Memory

In [Memory] page, the splice result memory and image can be downloaded and saved.



Splice result memory can only be downloaded.
It can not be uploaded to splicer.

5.2.1. Splice Results

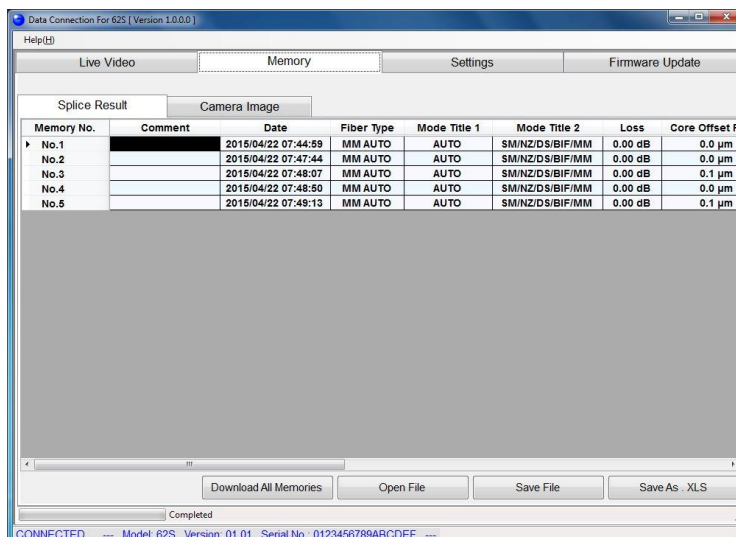
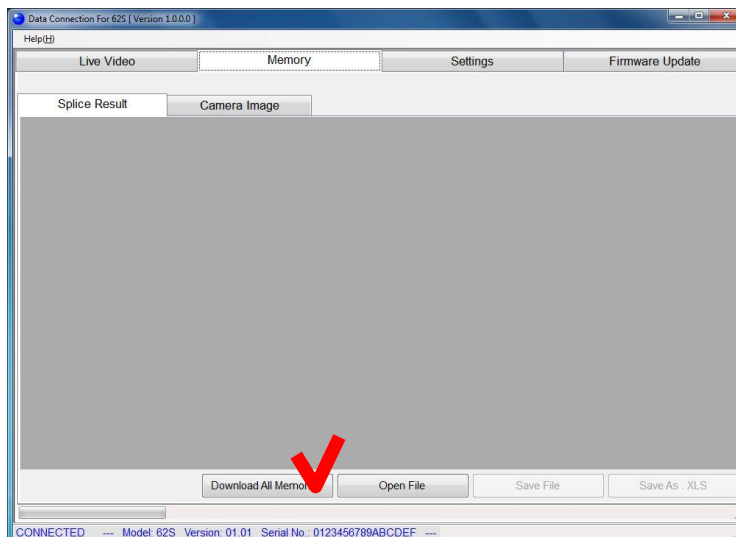
5.2.1.1 Download Splice Result Memory

(1) Confirm that the splicer is in “READY” state.



Press “RESET” key to change the splicer to “READY” state.

(2) Select [Memory] page, and click [Download All Memories] button to download all stored splice results.

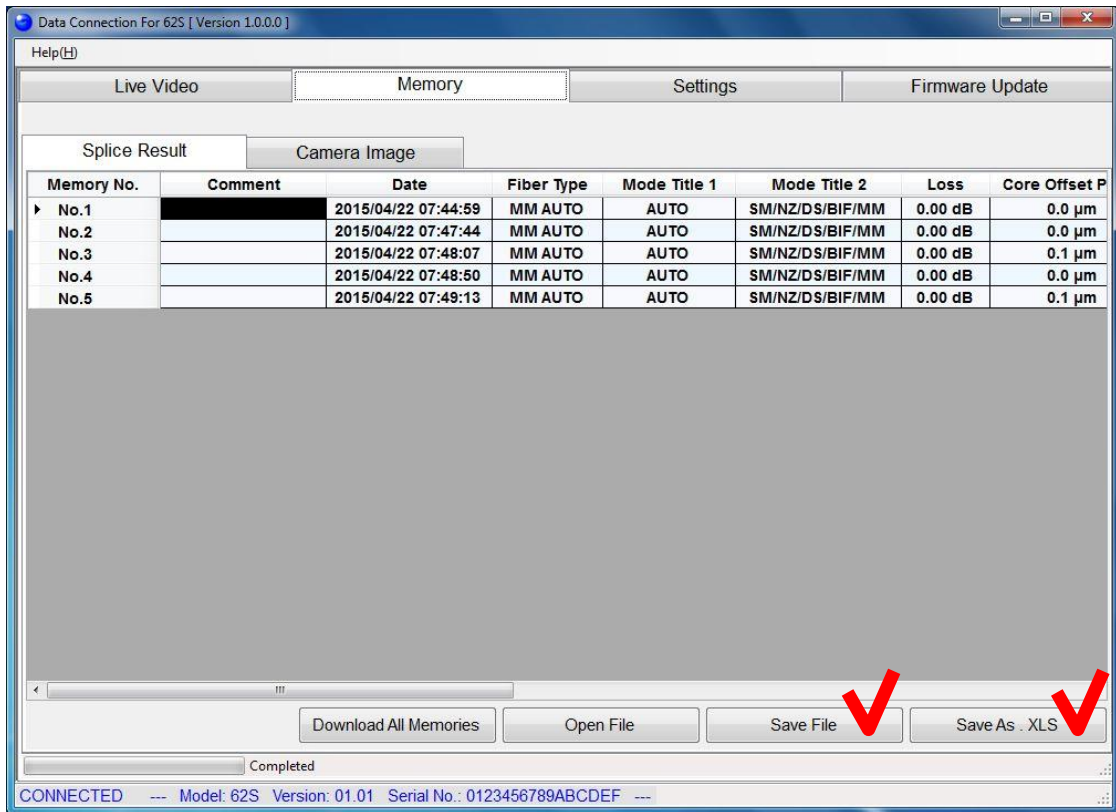


Memory No.	Comment	Date	Fiber Type	Mode Title 1	Mode Title 2	Loss	Core Offset P
No.1		2015/04/22 07:44:59	MM AUTO	AUTO	SM/NZ/DS/BIF/MM	0.00 dB	0.0 μm
No.2		2015/04/22 07:47:44	MM AUTO	AUTO	SM/NZ/DS/BIF/MM	0.00 dB	0.0 μm
No.3		2015/04/22 07:48:07	MM AUTO	AUTO	SM/NZ/DS/BIF/MM	0.00 dB	0.1 μm
No.4		2015/04/22 07:48:50	MM AUTO	AUTO	SM/NZ/DS/BIF/MM	0.00 dB	0.0 μm
No.5		2015/04/22 07:49:13	MM AUTO	AUTO	SM/NZ/DS/BIF/MM	0.00 dB	0.1 μm

How to use the Data Connection For 62S

5.2.1.2 Save Splice Result Memory

- (1) Click [Save File] or [Save As .XLS] button to save the splice result memories.



[Save File]

Data is saved to a file. Only Data Connection can open this data file.

[Save As .XLS]

Data is exported as XLS file so that the data can be opened by Microsoft Excel. Note that Data Connection cannot open this exported file.

How to use the Data Connection For 62S

5.2.1.3 Open Splice Result Memory Data

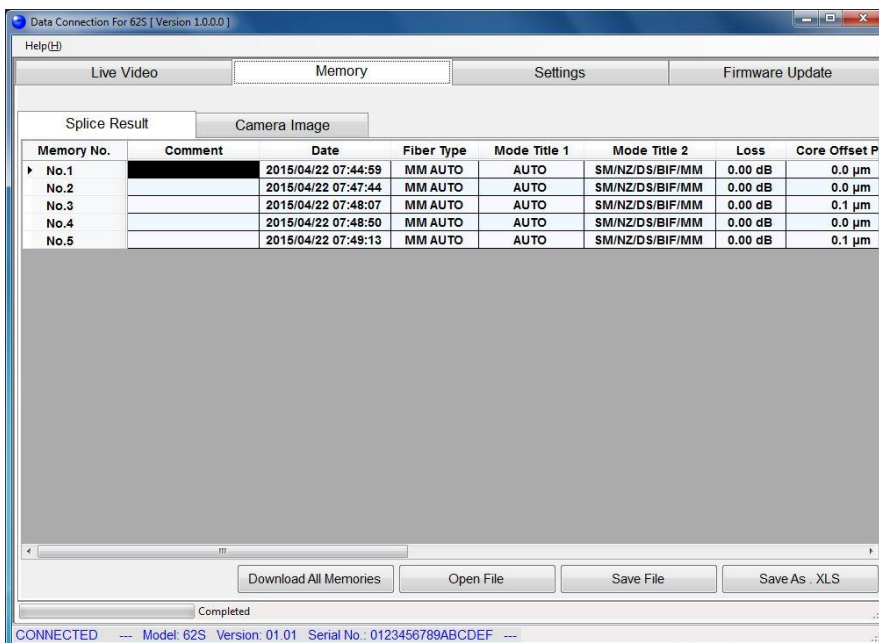
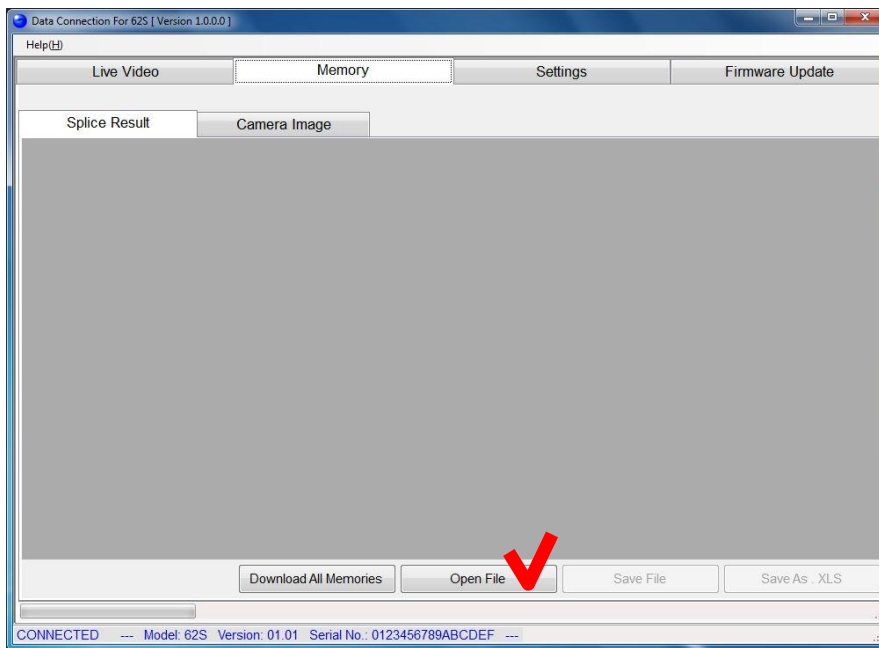


This function is available without USB connection.



Splice result memory data cannot be opened when a different model of splicer is connected.

Select [Memory] page, and click [Open File] button.
When the file open dialog is shown, select the saved file.



5.2.2. Camera Images

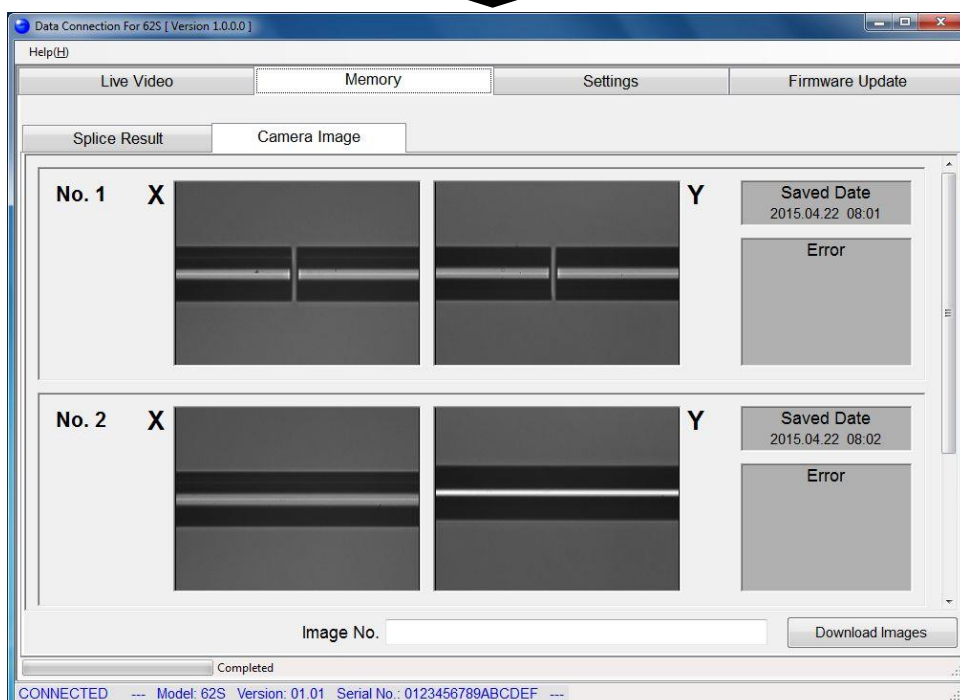
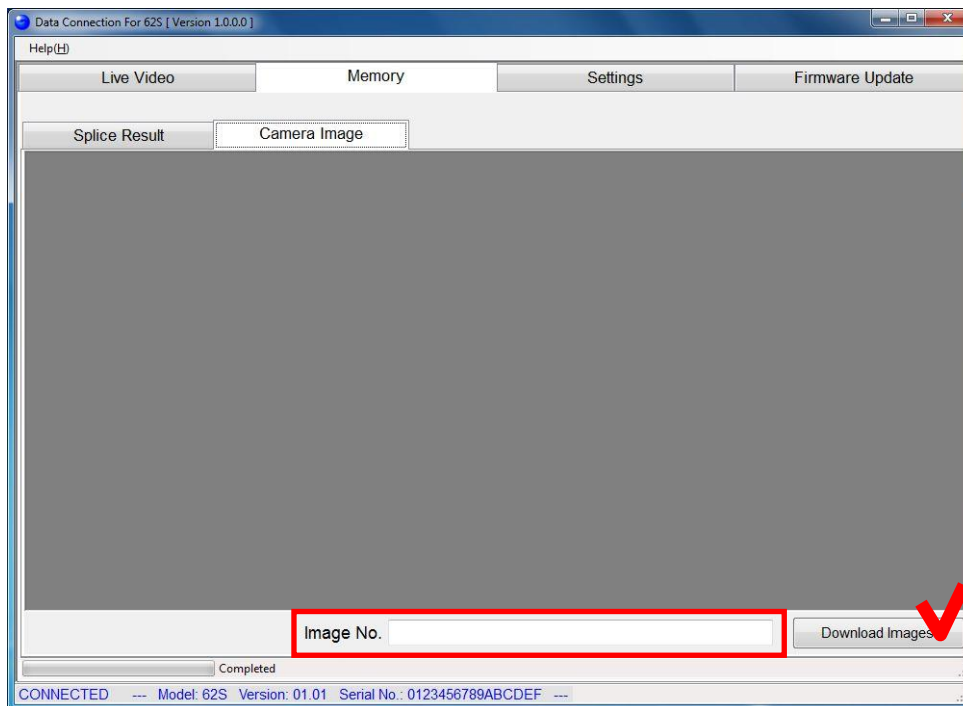
5.2.2.1 Download Camera Images

- (1) Confirm that the splicer is in “READY” state.



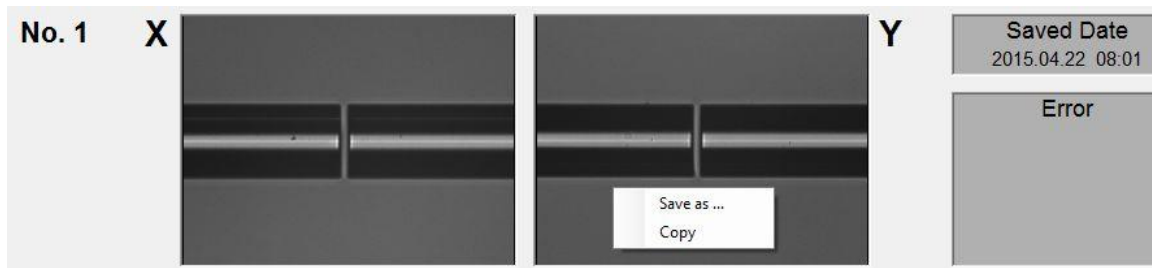
Press “RESET” key to change the splicer to “READY” state.

- (2) Select [Camera Image] tab in [Memory] page, and click [Download Images] button. Input such as “1-10”, “1,3,5” into [Image No.] textbox to download specified images. To download all images, input nothing here.



5.2.2.2 Save Images

(1) Right-click the image to show the menu and select the operation.



[Save As ...]

Save the selected image as .jpg file.

[Copy]

Copy the selected image to clipboard.

5.3. Download, Save, Edit and Upload Settings

In [Settings] page, the splice settings can be downloaded, saved, edited and uploaded. [Setting] page consists of 3 additional pages.

Please note that some items are displayed on the page which is different from splicer.

Item	Page in Splicer	Page in Data Connection
Splice Mode	Splice Menu	Splice Mode Settings
Heater Mode	Heater Menu	Heater Mode Settings
Splice Settings	Splice Menu	Other Settings
Splice Memory Comment		
Auto Cover Open	Heater Menu	
Machine Settings	Maintenance	
Supervisor Menu		

How to use the Data Connection For 62S

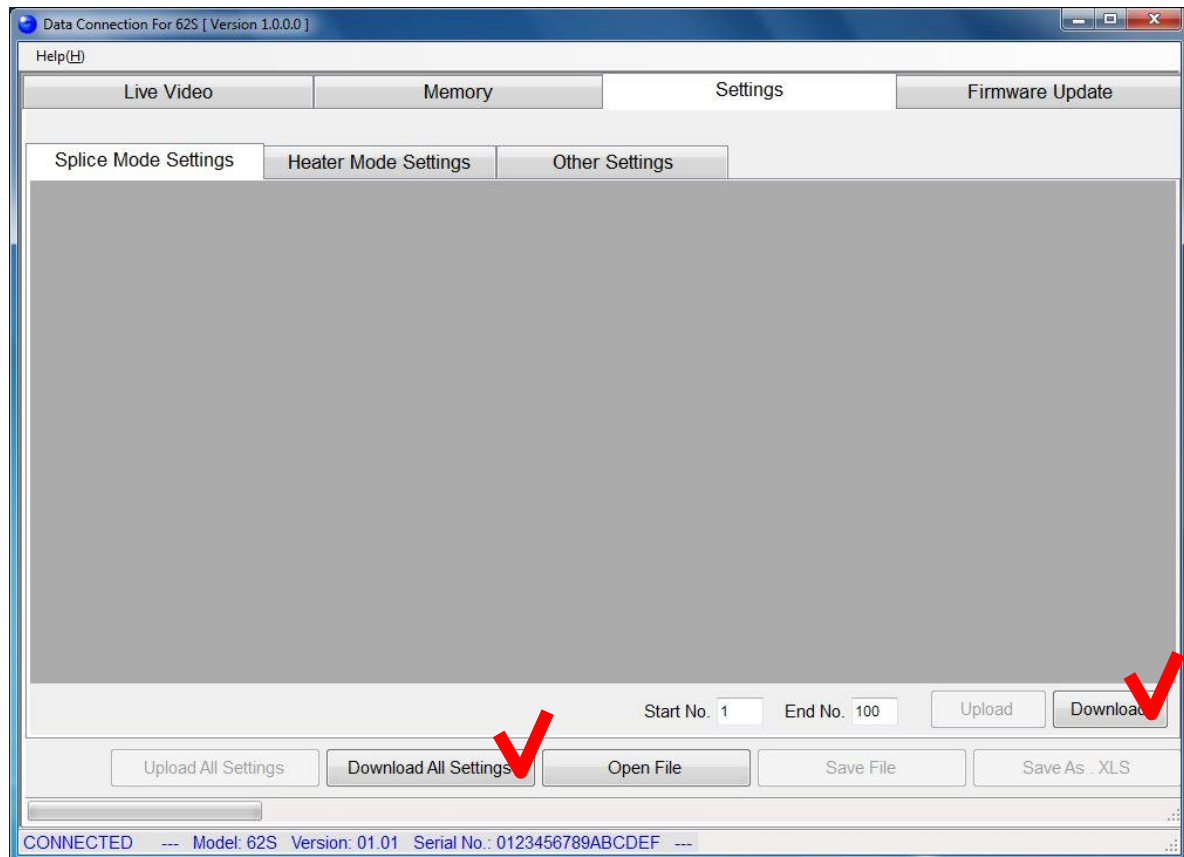
5.3.1. Download Settings

Confirm that the splicer is in “READY” state.



Press [RESET] key to change the splicer to “READY” state.

Select [Settings] page.



Download all of [Splice Mode Settings], [Heater Mode Settings] and [Other Settings]

Click [Download All Settings] button

Download one of [Splice Mode Settings], [Heater Mode Settings] and [Other Settings]

Select page you want to download, and click [Download] button.
(In above picture, [Splice Mode Settings] will be downloaded.)



In [Splice Mode Settings] and [Heater Mode Settings] page, you can select the mode number to download specifying [Start No.] and [End No.].

How to use the Data Connection For 62S

5.3.2. Save Settings

Click [Save File] or [Save As .XLS] button to save the settings. When file save dialog is shown, input file name and destination.

	No.1	No.2	No.3	No.4	No.5	N
Fiber Type	AUTO	SM AUTO	MM AUTO	NZ AUTO	DS AUTO	SI
Mode Title 1	AUTO	SM AUTO	MM AUTO	NZ AUTO	DS AUTO	S
Mode Title 2	SM/NZ/DS/BIF/MM					
AUTO/FAST Mode						
Rearc Time [ms]	800	800	800	800	800	
Proof Test	ON	ON	ON	ON	ON	
Cleaning Arc [ms]	150	150	150	150	150	
Arc Power [bit]	AUTO	AUTO	AUTO	AUTO	AUTO	
Arc Time [ms]	AUTO	AUTO	AUTO	AUTO	AUTO	
Cleave Angle Limit [°]	3.0	3.0	5.0	1.5	1.5	
Cleave Shape Error	NORMAL	NORMAL	NORMAL	NORMAL	NORMAL	N
Fiber Angle Limit [°]	1.0	1.0	2.0	1.0	1.0	
Loss Limit [dB]	0.20	0.20	0.20	0.20	0.20	
Bubble Sensitivity	STANDARD	STANDARD	STANDARD	STANDARD	STANDARD	STA
Standard Mode						
Rearc Time [ms]						
Proof Test						
Cleaning Arc [ms]						
Gap [μm]						

Start No. 1 End No. 100 Upload Download

Upload All Settings Download All Settings Open File Save File Save As .XLS

Completed

CONNECTED --- Model: 62S Version: 01.01 Serial No.: 0123456789ABCDEF ---

[Save File]

Data is saved to a file. Only Data Connection can open this data file.

[Save As .XLS]

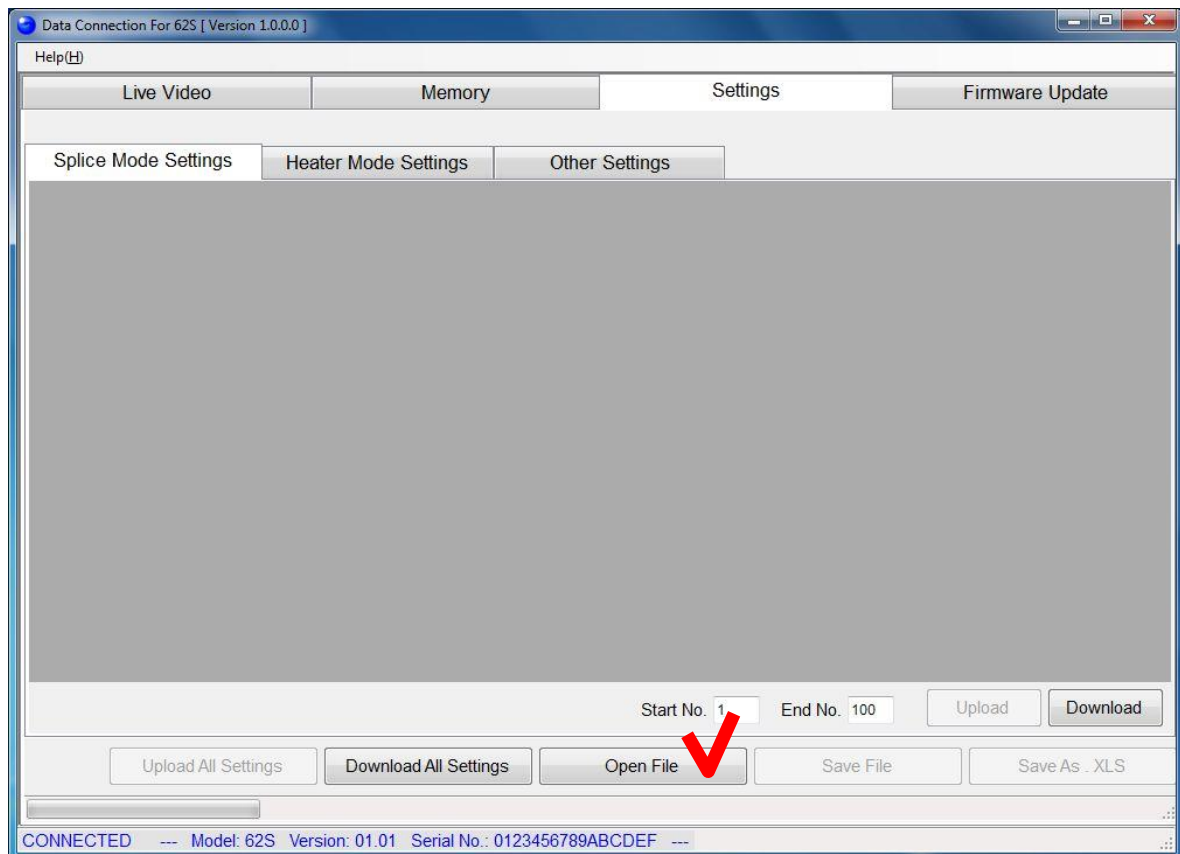
Data is exported as XLS file so that the data can be opened by Microsoft Excel. Note that Data Connection cannot open this exported file.

5.3.3. Open Settings Data



This function is available without USB connection.

Select [Settings] page and click [Open File].
When file open dialog is shown, select the saved file.



How to use the Data Connection For 62S

5.3.4. Edit Settings

Click the cell to edit.

There are specific methods to change the setting. Follow the Data Connection display to change the setting.



When the value of “Fiber Type” is changed, all parameters in the selected mode will be reset to original factory values.



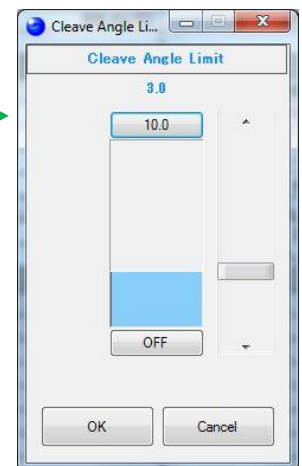
When the value of “Sleeve Type” is changed, all parameters in the selected mode will be reset to original factory values.

(a) Select item from list.

Cleaning Arc [ms]	150	150
Arc Power [bit]	AUTO	AUTO
Arc Time [ms]	AUTO	AUTO
Cleave Angle Limit [°]	3.0	3.0
▶ Cleave Shape Error	NORMAL	NORMAL
Fiber Angle Limit [°]	OFF	1.0
Loss Limit [dB]	ROUGH	0.20
Standard Mode	NORMAL	
Rearc Time [ms]	FINE	
Cleaning Arc [ms]		

(b) Change value with bar.

Cleaning Arc [ms]	150	150
Arc Power [bit]	AUTO	AUTO
Arc Time [ms]	AUTO	AUTO
▶ Cleave Angle Limit [°]	3.0	
Cleave Shape Error	NORMAL	NORMAL
Fiber Angle Limit [°]	1.0	1.0
Loss Limit [dB]	0.20	0.20
Standard Mode		
Rearc Time [ms]		
Cleaning Arc [ms]		



(c) Input with keyboard directly.

	No.1	No.2
Fiber Type	AUTO	SM AUTO
Mode Title 1	AUTO	SM AUTO
▶ Mode Title 2	SM/NZ/DS/MM	
AUTO/FAST Mode		
Rearc Time [ms]	800	800
Cleaning Arc [ms]	150	150
Arc Power [bit]	AUTO	AUTO

How to use the Data Connection For 62S

5.3.5. Upload Settings

Confirm that the splicer is in "READY" state.



Press [RESET] key to change the splicer to "READY" state.

Upload all of [Splice Mode Settings], [Heater Mode Settings] and [Other Settings]

Click [Upload All Settings] button

Upload one of [Splice Mode Settings], [Heater Mode Settings] and [Other Settings]

Select the page you want to upload, and click [Upload] button.

(In the following picture, only [Splice Mode Settings] will be uploaded.)

	No.1	No.2	No.3	No.4	No.5	N
Fiber Type	AUTO	SM AUTO	MM AUTO	NZ AUTO	DS AUTO	SI
Mode Title 1	AUTO	SM AUTO	MM AUTO	NZ AUTO	DS AUTO	S
Mode Title 2	SM/NZ/DS/BIF/MM					
AUTO/FAST Mode						
Rearc Time [ms]	800	800	800	800	800	
Proof Test	ON	ON	ON	ON	ON	
Cleaning Arc [ms]	150	150	150	150	150	
Arc Power [bit]	AUTO	AUTO	AUTO	AUTO	AUTO	
Arc Time [ms]	AUTO	AUTO	AUTO	AUTO	AUTO	
Cleave Angle Limit [°]	3.0	3.0	5.0	1.5	1.5	
Cleave Shape Error	NORMAL	NORMAL	NORMAL	NORMAL	NORMAL	N
Fiber Angle Limit [°]	1.0	1.0	2.0	1.0	1.0	
Loss Limit [dB]	0.20	0.20	0.20	0.20	0.20	
Bubble Sensitivity	STANDARD	STANDARD	STANDARD	STANDARD	STANDARD	STA
Standard Mode						
Rearc Time [ms]						
Proof Test						
Cleaning Arc [ms]						
Gap [μm]						



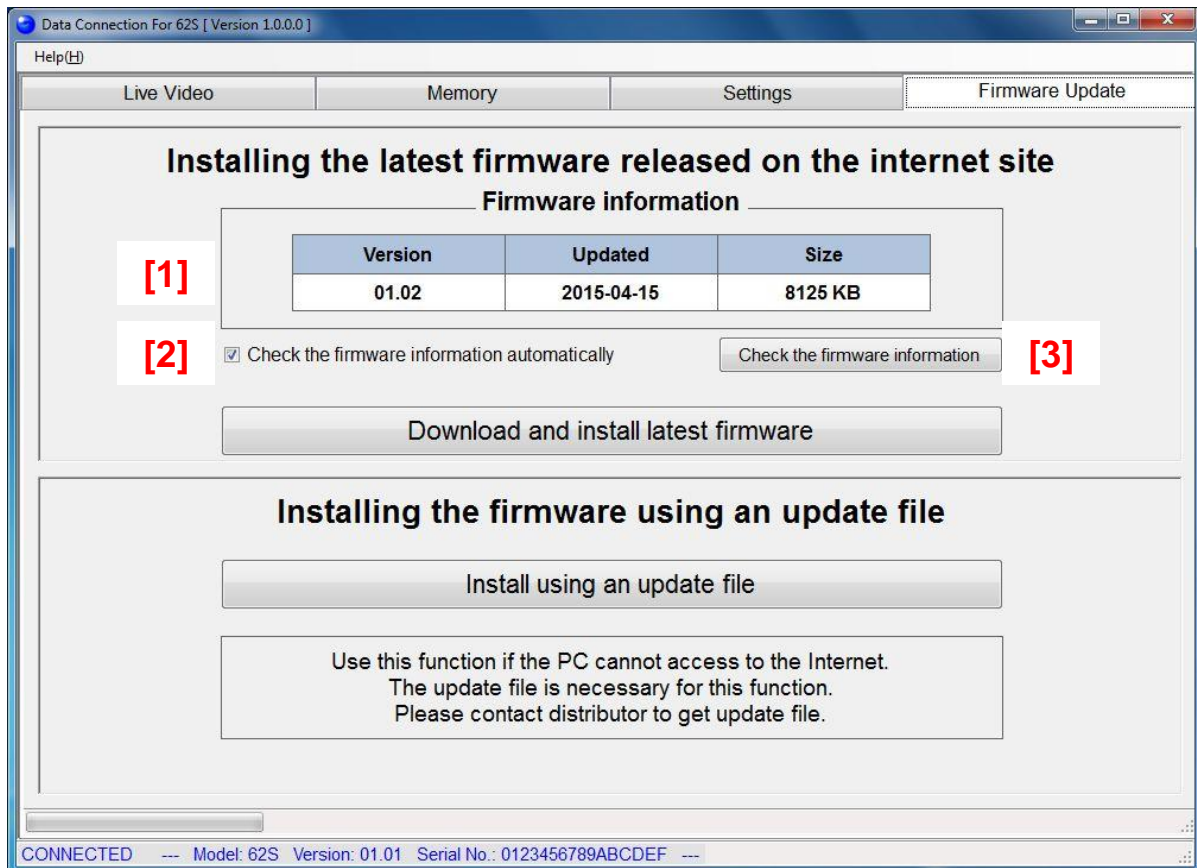
In [Splice Mode Settings] or [Heater Mode Settings] page, you can select the mode number to upload specifying the [Start No.] and [End No.]

5.4. Firmware Update

[Firmware Update] page provides firmware update function of the splicer.

When the PC is connected to internet, DataConnection downloads firmware update file from our server and installs it to the splicer.

Otherwise, if you have the firmware update file, the firmware can be installed to splicer using Data Connection without internet connection.



[1] Information of latest firmware

[2] Checkbox to enable check of the firmware information at logon. When the information is updated, message will be shown.

[3] Button to check the firmware information.

5.4.1. Install the Latest Firmware Released on the Internet



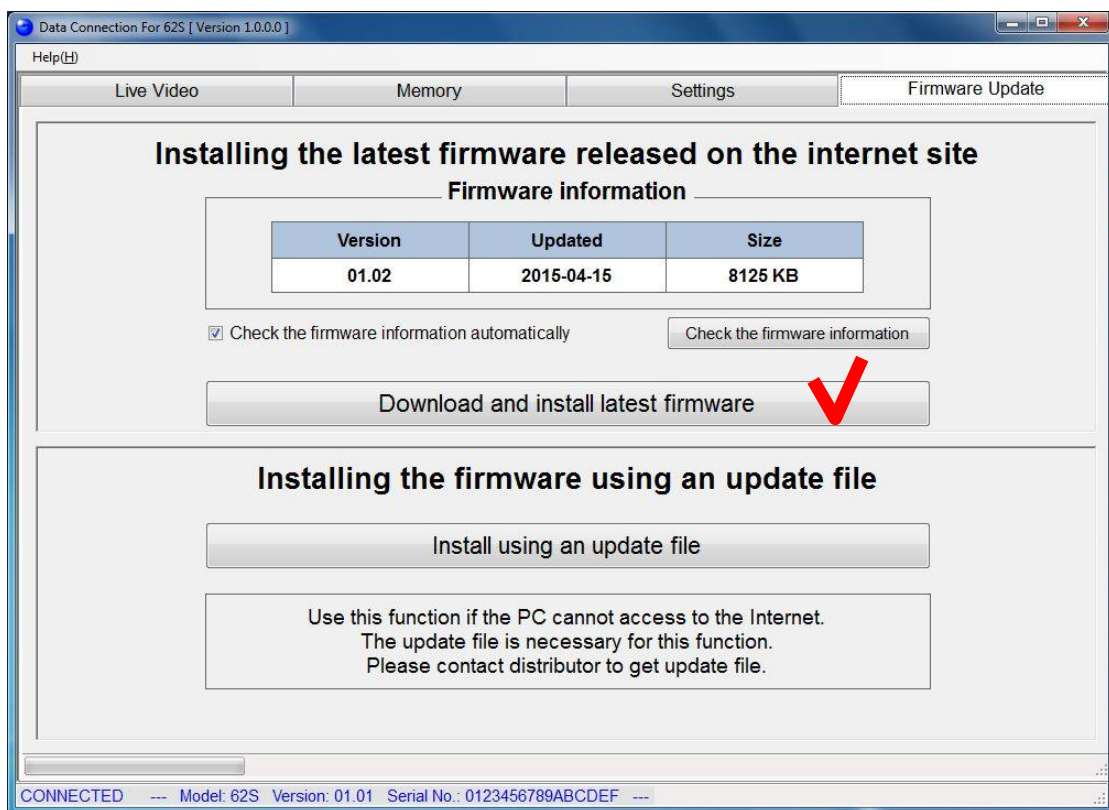
During firmware installation,

- Do not turn off the splicer.
- Do not disconnect USB cable.

(1) Confirm the following

- The splicer is connected to PC with USB cable.
- The splicer is in “READY” state.
- The PC is connected to Internet.

(2) Select [Firmware Update] page, and click [Download and install latest firmware] button.

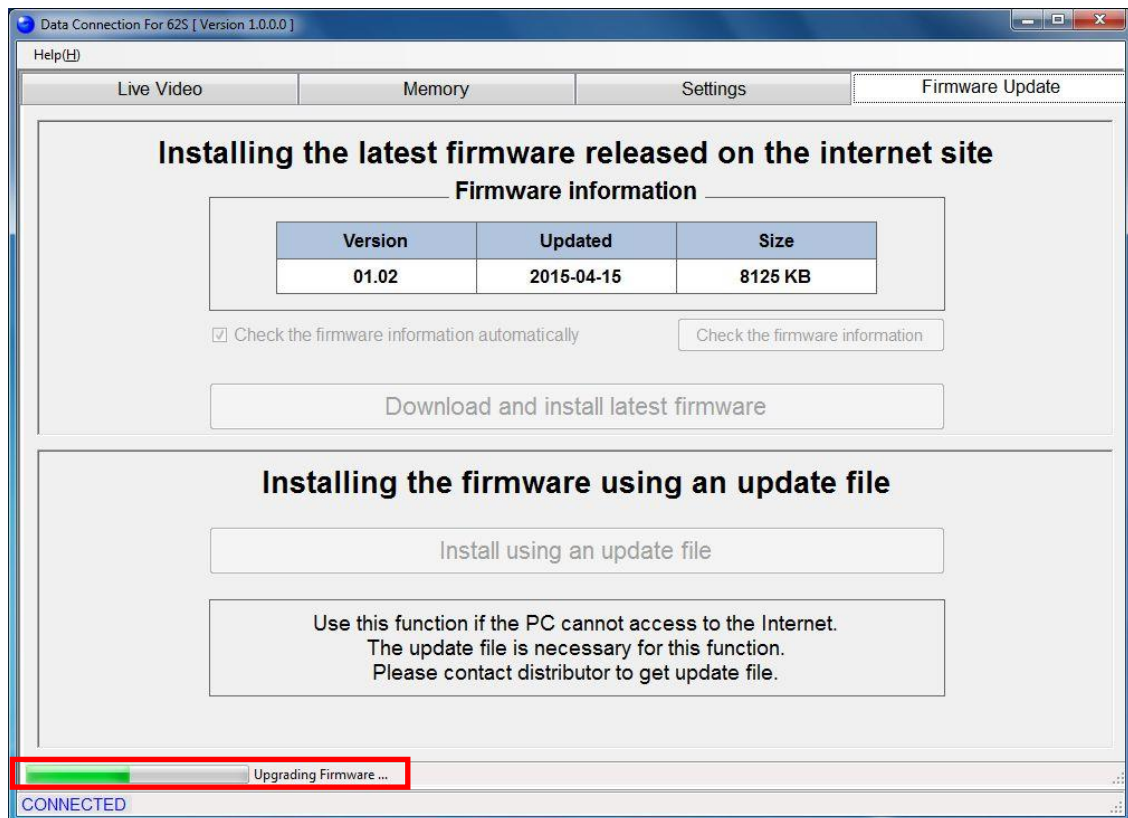


If the update file can not be downloaded, “Connect the PC to the internet” message will be shown. In this case, confirm the internet connection using web browser.

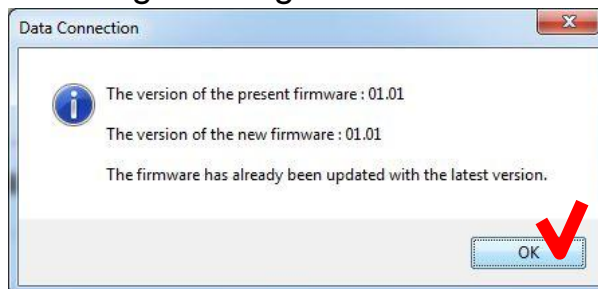
If the message is shown despite the PC can access the internet, the firewall of network system may block downloading the file. Please consult the administrator of your network system.

How to use the Data Connection For 62S

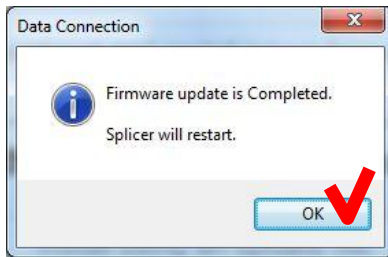
- (3) Firmware update will start, and status bar at bottom left of Data Connection will progress.



If the latest firmware has already been installed to the splicer, the following message will be shown and firmware will not updated.



- (4) When the following message is shown, click [OK] button to finish the update. Confirm that the splicer restarts and “READY” state is indicated on screen.



If the firmware update failed, the following problem will occur

- The splicer can not be turned on.
(The splicer does not restart after firmware update)
- “READY” state is not indicated on screen although the splicer is turned on.



When above problem occurs, please read [Installation of Firmware Failed] in [Chapter 7: Troubleshooting]

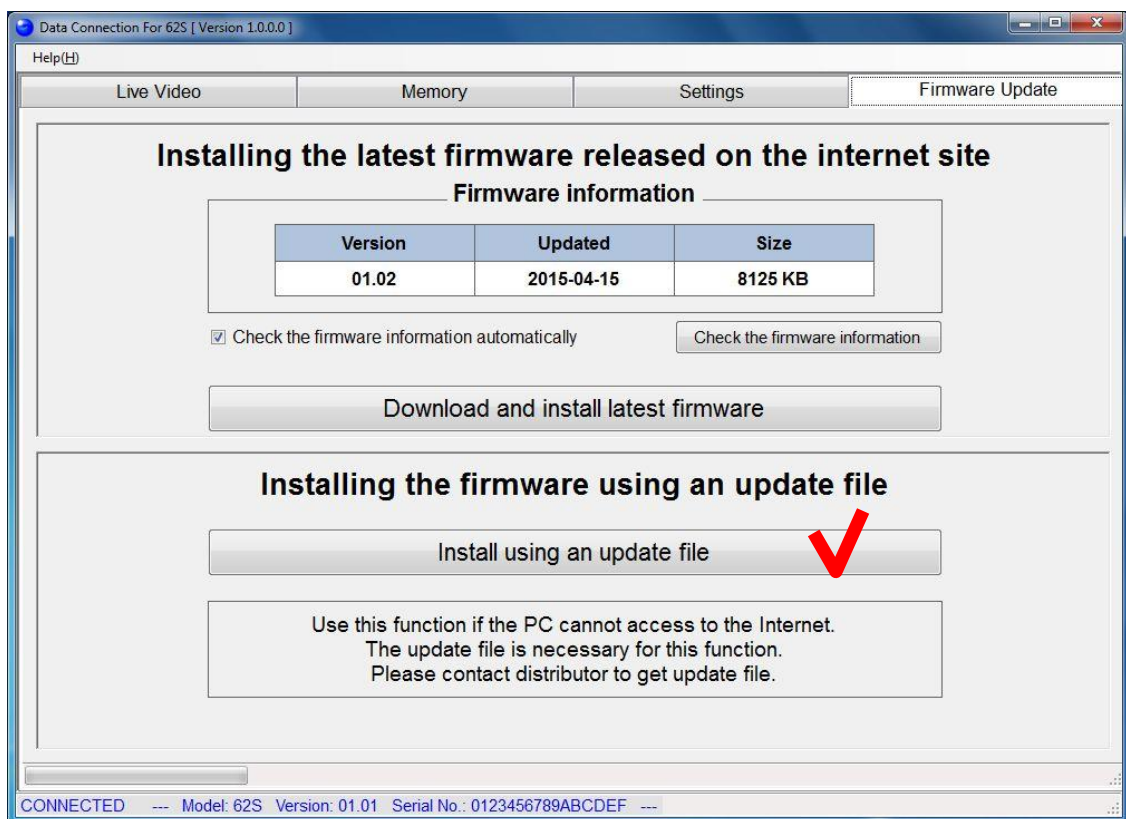
5.4.2. Install the Firmware Using an Update File



During firmware installation,

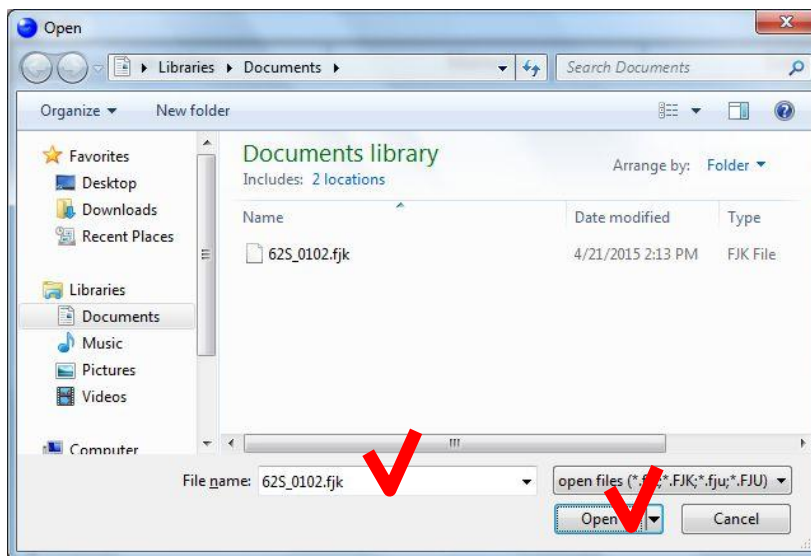
- Do not turn off the splicer.
- Do not disconnect USB cable.

- (1) Confirm the following
 - The splicer is connected to PC with USB cable.
 - The splicer is in “READY” state.
- (2) Select [Firmware Update] page, and click [Install using an update file] button.

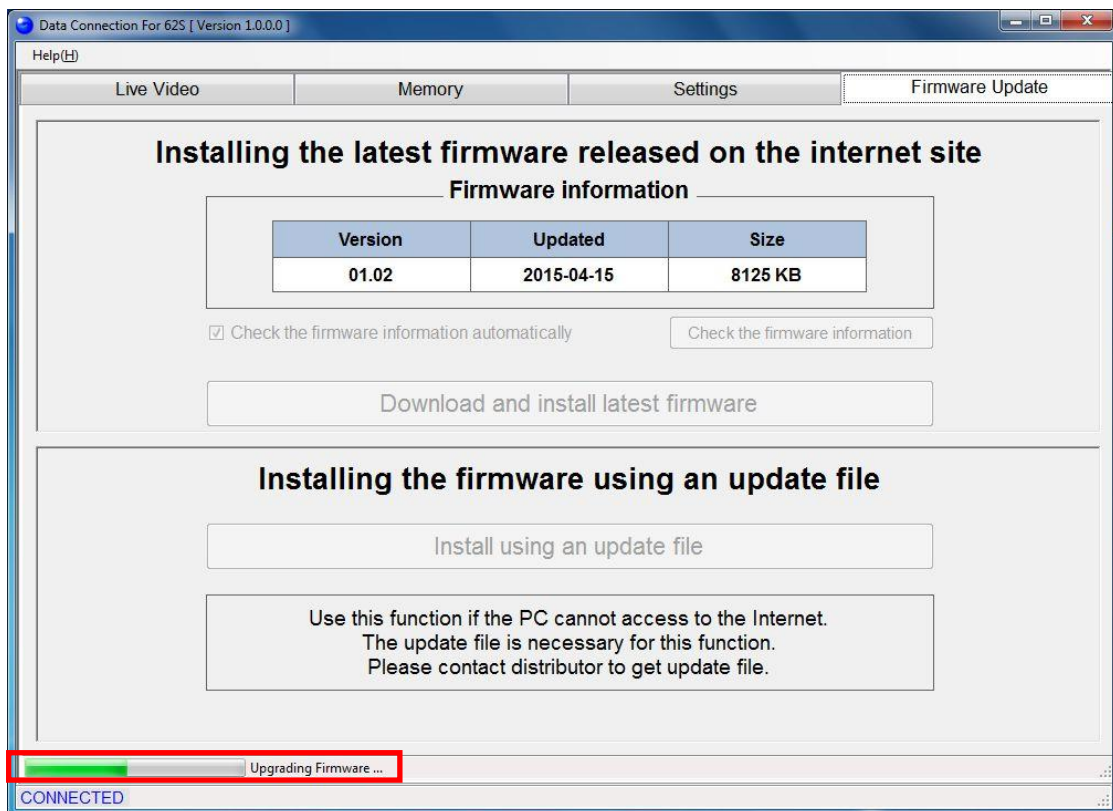


How to use the Data Connection For 62S

(3) When file open dialog is shown, select the update file.

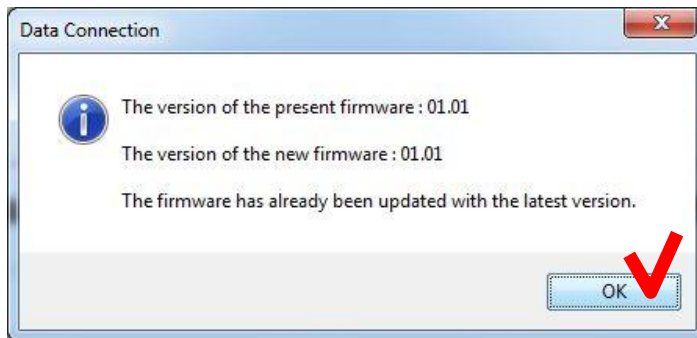


(4) Firmware update will start, and status bar will progress.

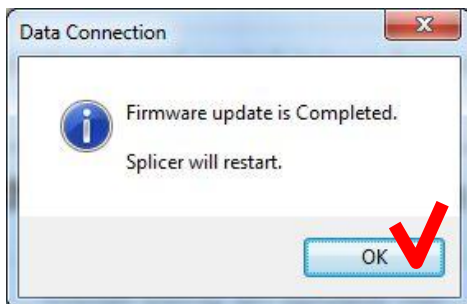


How to use the Data Connection For 62S

If the latest firmware has already been installed to the splicer, the following message will be shown and firmware will not be updated.



- (5) When the following message is shown, click [OK] button to finish the update. Confirm that the splicer restarts and "READY" state is indicated on screen.



If the firmware update failed, the following problem will occur

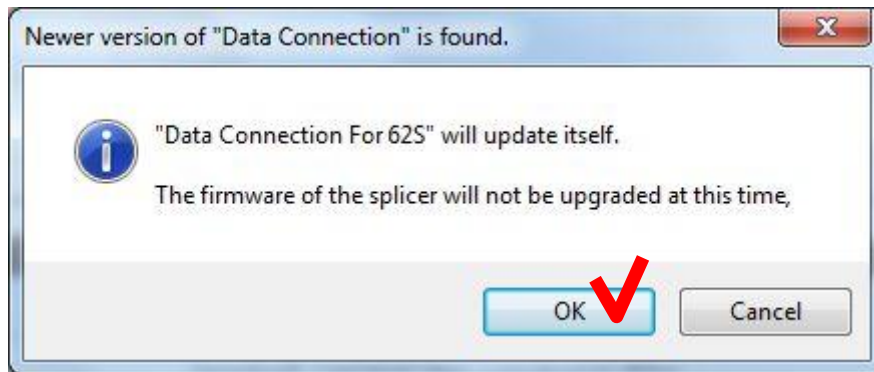
- The splicer can not be turned on.
(The splicer does not restart after firmware update)
- "READY" state is not indicated on screen although the splicer is turned on.



When above problem occurs, please read [Installation of Firmware Failed] in [Chapter 7: Troubleshooting]

5.5. Update Data Connection

Data Connection has self-update feature. If the following message is shown when Data Connection is starting, click [OK] to start updating Data Connection.



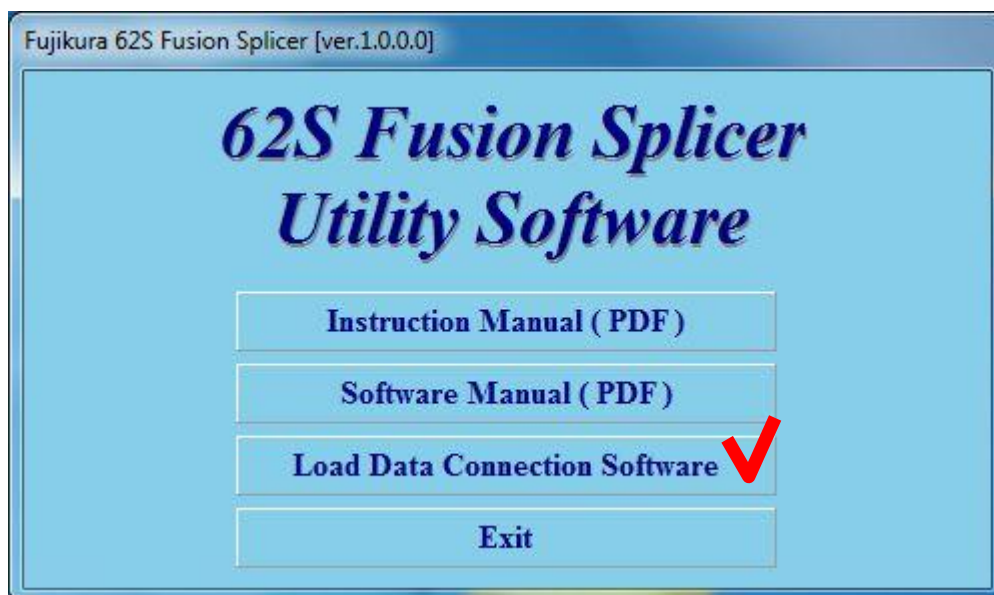
Internet connection is necessary for self-update.

6. Uninstall the Data Connection

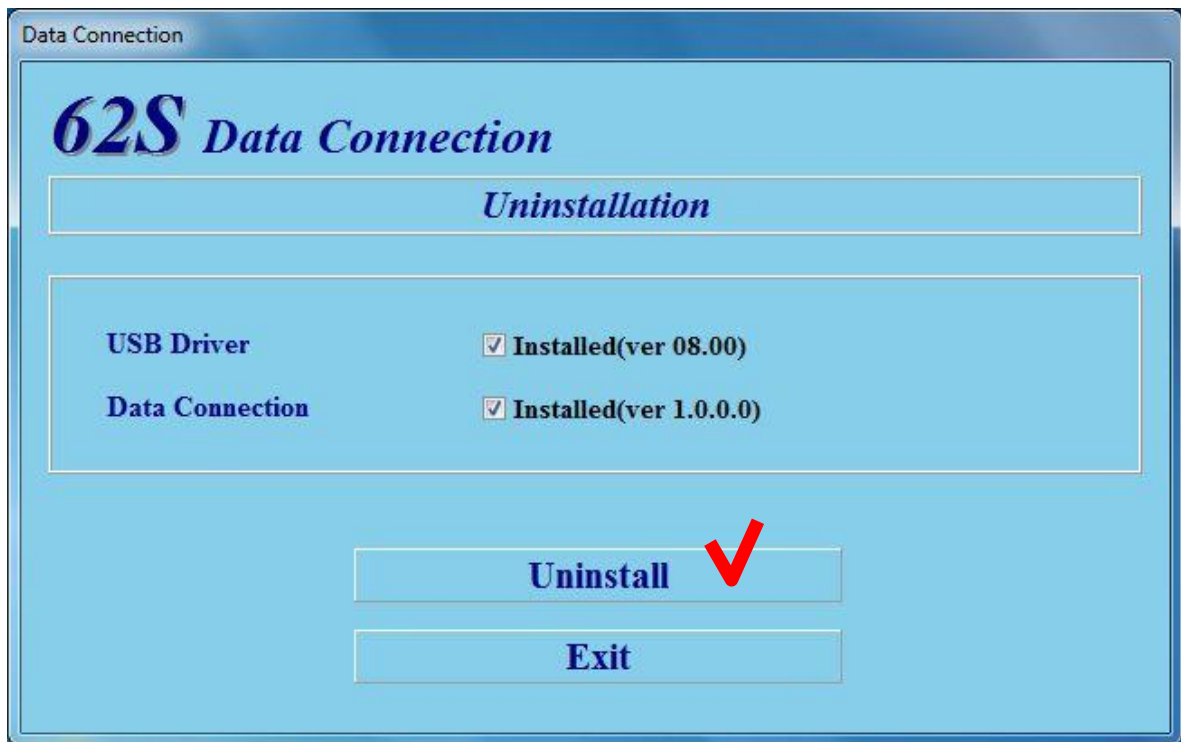
- (1) Confirm that the USB cable is **not connected**.
- (2) Insert the instruction CD into CD-ROM or DVD drive.
- (3) After a few seconds, instruction menu will be shown.
If the menu is not shown, double-click "Utility.exe" which is in the root of the instruction CD.

Name	Date modified	Type
DotNetFx	4/22/2015 1:16 PM	File
manual	4/22/2015 1:16 PM	File
vcredist	4/22/2015 1:16 PM	File
x64	4/22/2015 1:16 PM	File
x86	4/22/2015 1:16 PM	File
autorun.inf	10/13/2012 3:23 PM	Set
install.txt	4/21/2015 2:13 PM	Tex
Installer.exe	4/22/2015 11:08 AM	Ap
Utility.exe	4/16/2015 9:14 AM	Ap

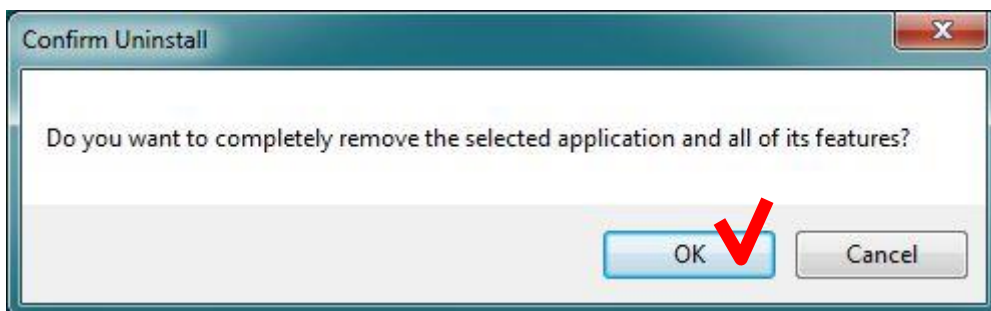
- (4) Click [Load Data Connection Software] button.



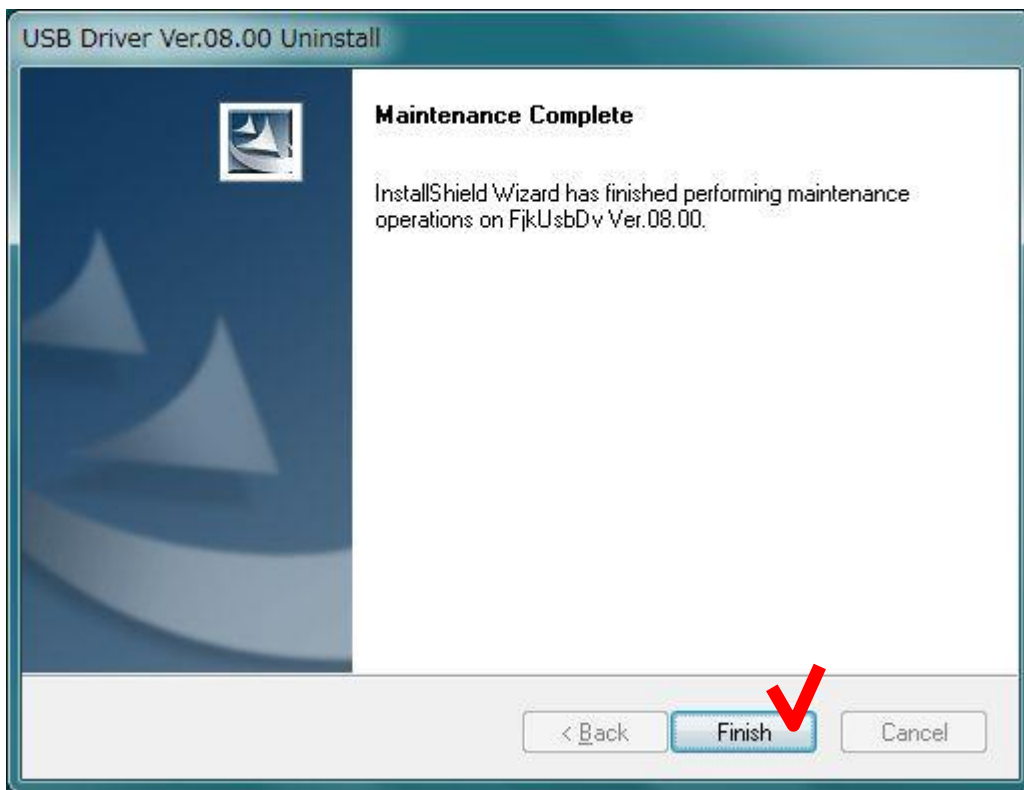
(5) When the following window is shown, click [Uninstall] button.



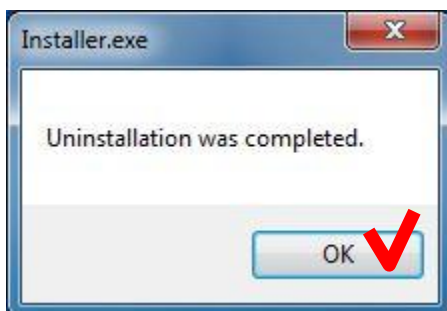
(6) When the [Confirm Uninstall] message is shown, click [OK] button to continue.



(7) When [Maintenance Complete] window is shown, click [Finish] button.



(8) When the following message is shown, click [OK] to complete installation.



(9) Click [Exit] button to close menu.



7. Troubleshooting

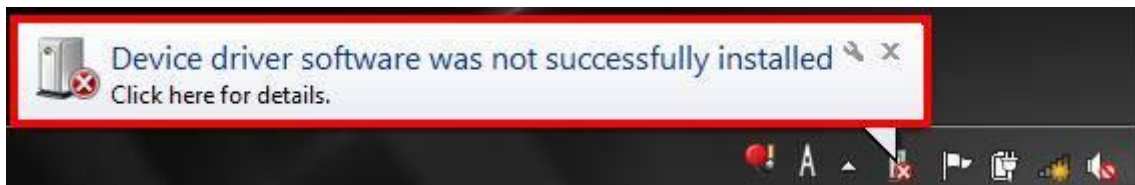
When trouble occurs during installation or when using Data Connection, please read this chapter.



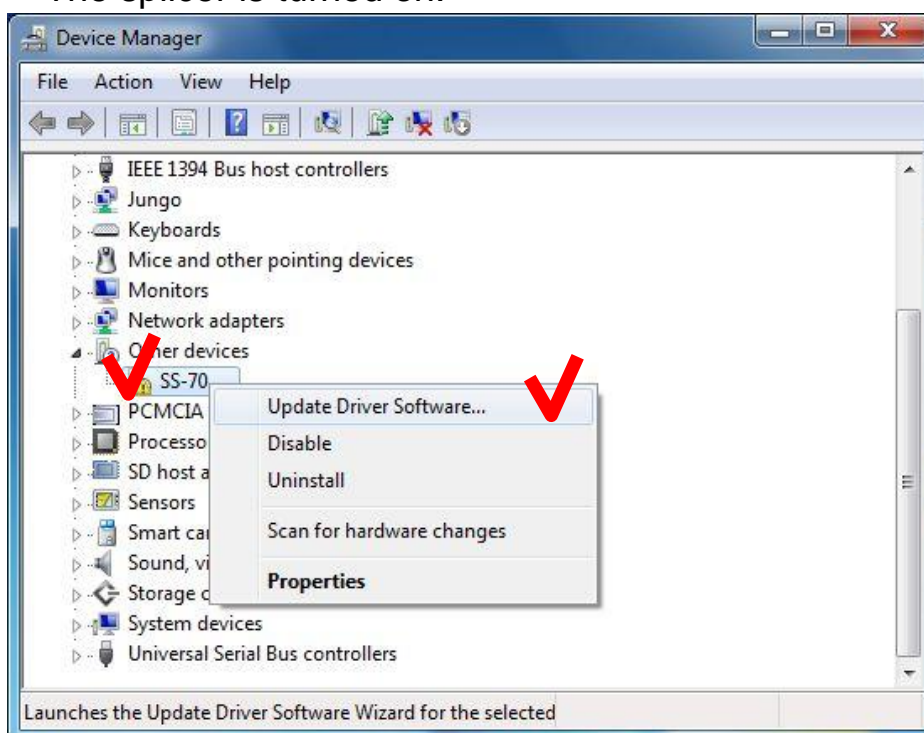
If the trouble is not fixed despite performing the following procedure, please contact us.

7.1. Installation of the Device Driver Failed

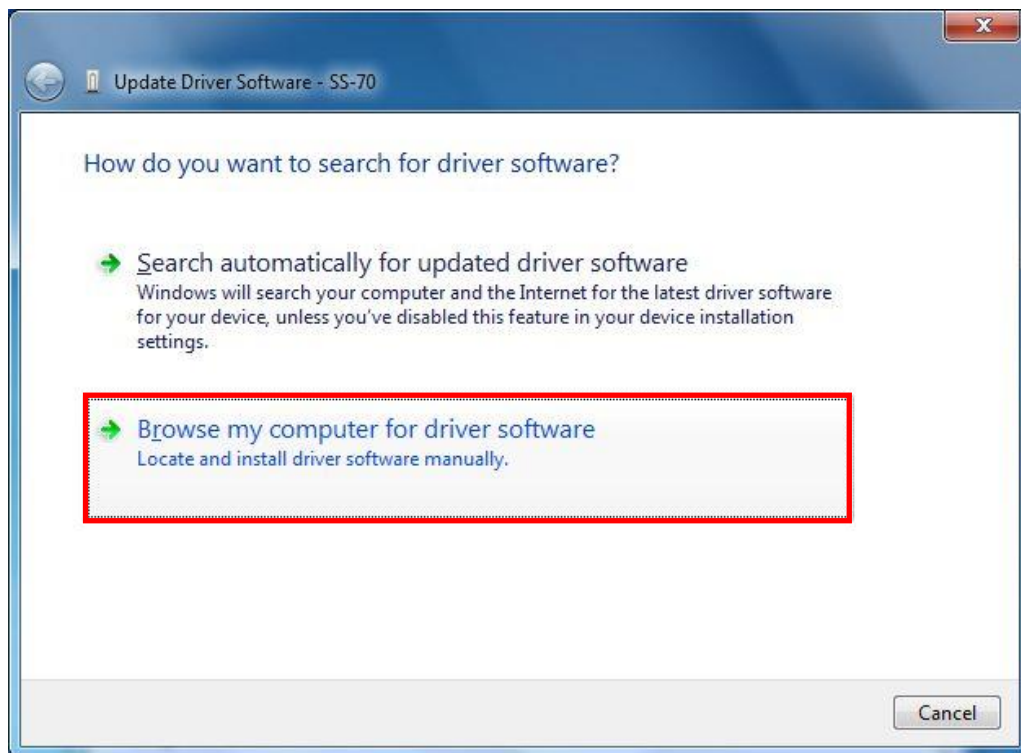
When first connecting to PC, the device driver should be installed automatically. If the installation failed (the following window was shown), install device driver according to procedure listed in the following pages.



- (1) Open [Start] > [Control Panel] > [System] > [Hardware] > [Device Manager] menu to open "Device Manager".
- (2) Right-click on "SS-70" in the [Jungo] or [Other devices] and select "Update Driver Software...".
If "SS-70" is not listed, confirm the following.
 - The splicer is connected to PC with USB cable.
 - The splicer is turned on.



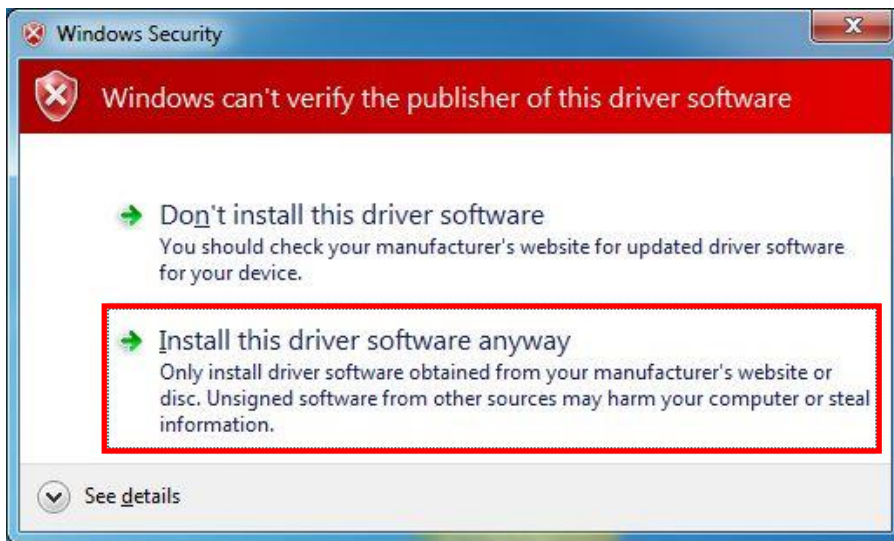
(3) Click “Browse my computer for driver software”.



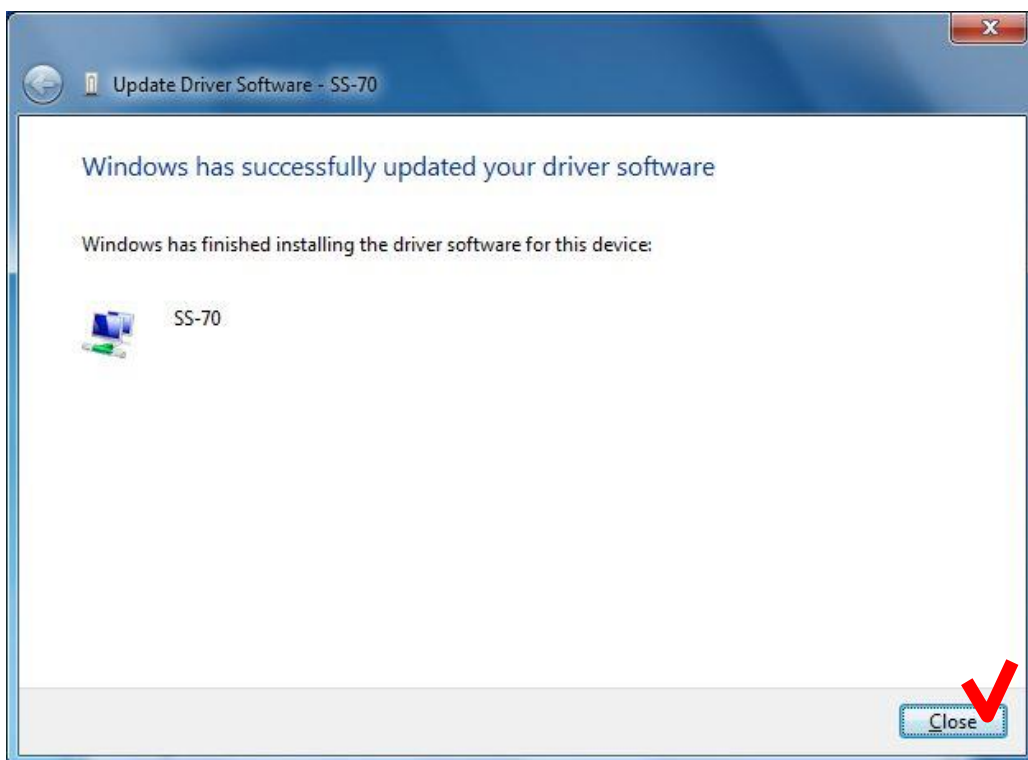
(4) Click [Browse...] and select “C:\FjkUsbDv”. After selecting, check [Include subfolders] and click [Next] button.



- (5) When the following message is shown, click “Install this driver software anyway”.



- (6) When the following window is shown, click [Close] button



- (7) Close “System Properties” and “Device Manager”.



The folder name (v_06_02) means version of USB driver. The version may vary depending on Instruction CD or installation state of other software.

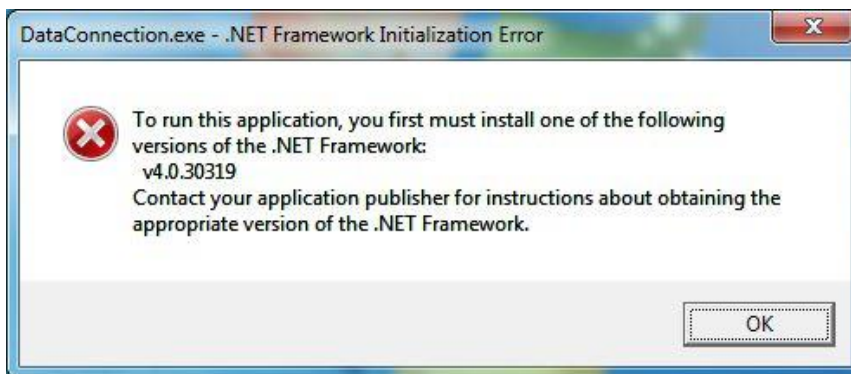
v_06_02 or later is necessary to use Data Connection For 62S. If the folder of later version exists, select it. If less than v_06_02 only exists, please contact us.

7.2. Data Connection Does Not Run

Data Connection is not shown although the icon was clicked

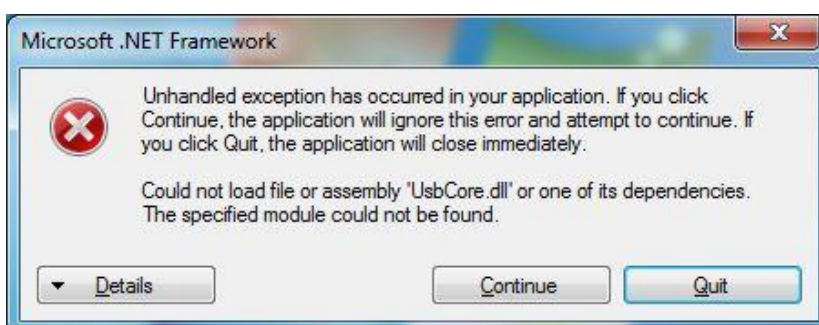
- (a) Windows may not be updated to latest version. Perform Windows Update or Microsoft Update to update Windows.
- (b) Memory capacity or CPU speed may be insufficient to meet the system requirement.
 - Close other running applications.
 - Confirm that memory capacity and CPU speed meet the system requirement.

“.NET Framework Initialization Error” is shown when Data Connection is launched



- (a) “Microsoft .NET Framework 4 Client Profile” may not be installed. Double-click “dotNetFx40_Client_x86_x64.exe” in “DotNetFx” folder in instruction CD to install “Microsoft .NET Framework 4 Client Profile”.
- (b) Windows may not be updated to latest. Perform Windows Update or Microsoft Update to update Windows.

.NET Framework error is shown when Data Connection is launched



- (a) “Microsoft Visual C++ 2010 Redistributable” may not be installed. Double-click following file in “vcredist” folder in instruction CD to install “Microsoft Visual C++ 2010 Redistributable”.
 64bit OS: vcredist_x64.exe
 32bit OS: vcredist_x86.exe
- (b) Windows may not be updated to latest version. Perform Windows Update or Microsoft Update to update Windows.

7.3. Installation of Firmware Failed

If the installation of firmware failed, the following problem will occur.
When the problem occurs, perform the following procedure to install the firmware again.

- The splicer can not be turned on (Splicer does not restart after installation).
 - The splicer turns on, but “READY” state is not indicated.
- (1) Turn off the splicer.
 - (2) Then keep holding down the [RESET] key and turn on the splicer again. (Keep holding down keys until “SOFTWARE UPDATE MODE” is indicated on the screen.)
 - (3) In the [Firmware Update] page of Data Connection, click [Download and install latest firmware] button to install the firmware again.



If the update failure persists or you have some questions about this procedure, please contact us.

7.4. USB Communication Does Not Works

Confirm that the “CONNECTED” is indicated at bottom left of Data Connection window.

“DISCONNECTED” is indicated

- (a) Confirm that the splicer is connected to PC with USB cable.
- (b) Confirm that the splicer is turned on.
- (c) Confirm that the splicer is in “READY” state.
Press [RESET] key to change splicer to “READY” state.
- (d) If the external USB hub is used, connect the USB cable to PC directly.
- (e) USB driver may not be installed correctly.
Install the Data Connection again.

“Communication Error” message was shown during downloading or uploading (“CONNECTED” is indicated)

- (a) Confirm that the splicer is in “READY” state.
Press [RESET] key to change splicer to “READY” state.
- (b) If the external USB hub is used, connect the cable to PC directly.
- (c) The firmware version of splicer may not be the latest.
If the firmware is not the latest, update the firmware of splicer.

8. Contact Address

Inquiries concerning products should be made to the nearest distributor or one of the following:

Fujikura Europe Ltd.

C51 Barwell Business Park

Leatherhead Road, Chessington, Surrey KT9 2NY

England

Tel. +44-20-8240-2000 (Service: +44-20-8240-2020)

Fax. +44-20-8240-2010 (Service: +44-20-8240-2029)

URL <http://www.fujikura.co.uk>

AFL Telecommunications

260 Parkway East

Duncan, SOUTH CAROLINA 29334

U.S.A.

Tel. +1-800-235-3423 (Service: +1-800-866-3602)

Fax. +1-864-433-5560 (Service: +1-800-433-5452)

P.O.Box 3127 Spartanburg, SC 29304-3127

URL <http://www.AFLglobal.com>

Fujikura Asia Ltd.

438A Alexandra Road, #08-03 Blk A Alexandra Techno Park,
SINGAPORE, 119967

Tel. +65-6-2711312 Fax. +65-6-2780965

URL <http://www.fujikura.com.sg>

Fujikura Ltd.

1-5-1 Kiba, Koto-ku, Tokyo 135-8512

Japan

Tel. +81-3-5606-1164 Fax. +81-3-5606-1534

URL <http://www.fujikura.co.jp>

----- End of Document -----